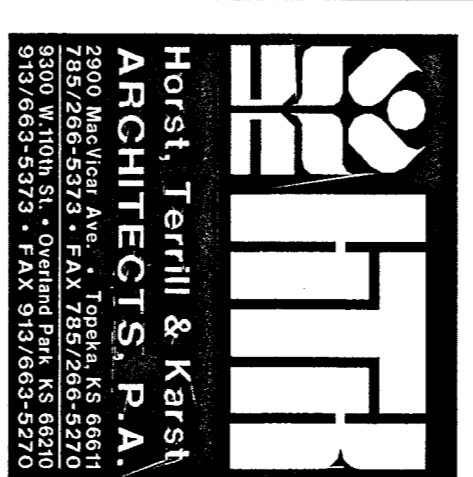


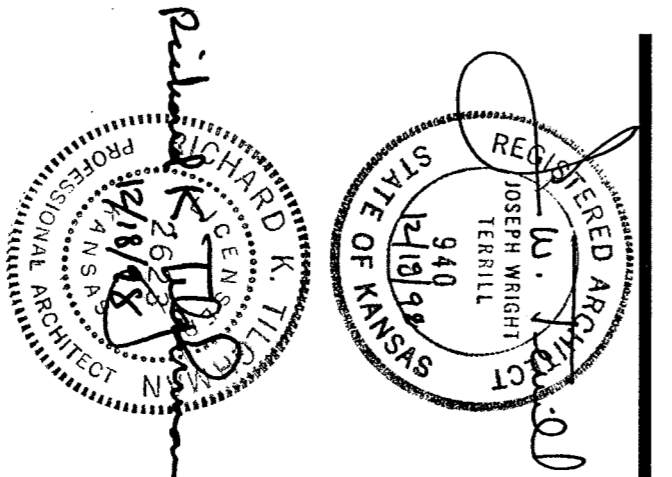
ADDITION TO & REMODELING OF THE TOPEKA & SHAWNEE COUNTY PUBLIC LIBRARY

1515 SW 10TH AVENUE • TOPEKA, KANSAS 66604-1374 • (785) 233-2040



Terrell & Kraft
ARCHITECTS, P.A.
2000 ZIEGLER AVENUE, SUITE 200
TOPEKA, KANSAS 66604-1374
TEL: (785) 233-2040
FAX: (785) 233-2041

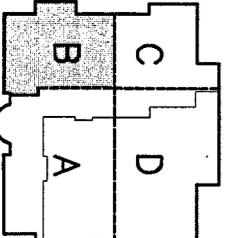
IN ASSOCIATION WITH
MICHAEL GRAVES
ARCHITECT



Date: DECEMBER 18, 1998
Revised Date:

Sheet Contents
LOWER FLOOR PLAN
PARTIAL PLAN - SW

Project Number: 961002 (d)
Sheet Number



A1.1B



SHEET A1.1B
The addition to the west end of the
Topeka & Shawnee County Public Library
1515 SW 10th St. from 10/28/98 to 12/18/98

1 PARTIAL LOWER FLOOR PLAN - SW

8'-1-0



NOTE: REFERENCE COMPOSITE PLANS
A1.1A, A2 & A3 FOR CORRESPONDING
LEGENDS AND NOTES.