

## **CONTRACT ADDENDUM NO. 2**

March 31, 2025

HTK Architects  
900 S Kansas Avenue  
Topeka, Kansas 66612  
Contact: Maddie Safford (mms@htkarchitects.com)  
Telephone: 785-266-5373



### **NOTICE TO ALL BIDDERS FOR THE:**

#### **Topeka & Shawnee County Public Library**

Staff Restrooms

HTK Project No.: 2001.01-016

The following are changes in the previously issued plans and specifications and supersede conflicting information so included. When a change is made affecting a part of a drawing or specification, the balance of that drawing or specification shall remain unchanged. Bidders must acknowledge receipt of this addendum in the space provided on the Bid Form. Failure to do so may subject Bidder to disqualification. The Contract Addendum is a part of the Contract Bid Documents and Construction Documents and shall govern the performance of the Work.

### **GENERAL:**

#### Article 1-01 008 Circulation Room Scope Increase

- 1) Contact Joe Hobbs or Maddie Safford for access to the Circulation Workroom prior to Bidding.

### **SPECIFICATIONS:**

#### Article 1-02 096513 – RESILIENT BASE & ACCESSORIES

- 1) Add Specification Section 096513 – Resilient Wall Base & Accessories

#### Article 1-03 096813 – CARPET TILE

- 1) Add Specification Section 096813 – Carpet Tile.

#### Article 1-04 099123 – INTERIOR PAINTING

- 1) Add 3.6.B.2

##### Water-Based Light-Industrial Coating System:

1. Prime Coat: Interior latex primer sealer.
  - a. Sherwin Williams Promar 200 Zero VOC Latex Primer
2. Intermediate Coat: Matching topcoat.
  - a. Sherwin Williams Pro Industrial Pre-Catalyzed Water-Based Epoxy
3. Topcoat: Interior, water-based, light-industrial coating, semigloss.
  - a. Sherwin Williams Pro Industrial Pre-Catalyzed Water-Based Epoxy

#### Article 1-05 102600 – WALL AND DOOR PROTECTION

- 1) Add Specification Section 102600 – Wall and Door Protection.

### **DRAWINGS:**

#### Article 1-06 A101 – ARCHITECTURAL PLANS

- 1) Add Architectural Plan Notes 7, 8, 9, 10, & 11 per Drawing Sheet.
- 2) Accent Paint/Tile Legend – Add Accent Paint B, Accent Paint C, and Accent Paint D.
- 3) Add Drawing View 8 – Floor Plan – Circulation Workroom.

#### Article 1-07 A201 – INTERIOR ELEVATIONS, FINISH SCHEDULE, & MISC. DETAILS

- 1) Revise Room Finish Schedule Legend to include CPT Carpet Tile and RB Resilient Wall Base (4" High). Ref. Drawing Sheet.

- 2) Room Finish Schedule – RR: Add 008 Circulation Workroom, 008A Office, and 008B Office to the Room Finish Schedule. Ref. Drawing Sheet for finishes.
- 3) Add Int. Elev 16 and 17 showing Accent Paint designs and designations in the 008 Circulation Workroom. Provide up to (3) additional accent colors in 008 Circulation Workroom. All walls shall be painted the Field Paint color U.N.O.

Article 1-08 E102 – ENLARGED FLOOR PLANS - POWER

- 1) Add Drawing Sheet E102 for Power and Data in 008 Circulation Workroom.

Article 1-09 E301 – ELECTRICAL DETAILS AND SCHEDULES

- 1) Revise Drawing Sheet E301 per attached Drawing Sheet.

**(See 16 pages enclosed, 18 pages total)**

END OF ADDENDUM NO. 2 NARRATIVE

## SECTION 09 6513 - RESILIENT BASE AND ACCESSORIES

### PART 1 - GENERAL

#### 1.1 SUMMARY

- A. Section Includes:
  - 1. Resilient base and accessories.

#### 1.2 ACTION SUBMITTALS

- A. Product Data: For each type of product indicated.

#### 1.3 MAINTENANCE MATERIAL SUBMITTALS

- A. Furnish extra materials that match products installed and that are packaged with protective covering for storage and identified with labels describing contents
  - 1. Furnish not less than 10 linear feet for every 500 linear feet or fraction thereof, of each type, color, pattern, and size of resilient product installed.

#### 1.4 DELIVERY, STORAGE, AND HANDLING

- A. Store floor tile and installation materials in dry spaces protected from the weather, with ambient temperatures maintained within range recommended by manufacturer, but not less than 50 deg F (10 deg C) or more than 90 deg F (32 deg C). Store floor tiles on flat surfaces.

#### 1.5 PROJECT CONDITIONS

- A. Maintain ambient temperatures within range recommended by manufacturer, but not less than 70 deg F (21 deg C) or more than 85 deg F (29 deg C) in spaces to receive floor tile during the following time periods:
  - 1. 48 hours before installation.
  - 2. During installation.
  - 3. 48 hours after installation.
- B. Close spaces to traffic during floor installation.

### PART 2 - PRODUCTS

#### 2.1 RESILIENT BASE

- A. Resilient Base:
  - 1. Manufacturers: Subject to compliance with requirements, provide the following:
    - a. Roppe Corporation, Pinnacle Series, Type TS, rubber, vulcanized thermoset.

- B. Resilient Base Standard: ASTM F 1861.
  - 1. Material Requirement: Type TS (rubber, vulcanized thermoset).
  - 2. Manufacturing Method: Group I (solid, homogeneous).
  - 3. Style: Cove (base with toe).
- C. Minimum Thickness: 0.125 inch.
- D. Length: Full coil lengths only. Four-foot strips will not be accepted.
- E. Height: 4 inches
- F. Outside Corners: Job formed.
- G. Inside Corners: Job formed.
- H. Colors and Patterns: 123 Charcoal.

## 2.2 RESILIENT MOLDING ACCESSORY

- A. Resilient Molding Accessory
  - 1. Manufacturers: Subject to compliance with requirements, provide products by one of the following:
    - a. Roppe Corporation
- B. Transition Strip
  - 1. Description: Carpet edge for glue-down applications, transition strip for carpet tile to LVT or VCT.
  - 2. Material: Rubber.
  - 3. Profile and Dimensions: As required for smooth transitions at each flooring application.
  - 4. Color and Patterns: Same as wall base.

## 2.3 INSTALLATION MATERIALS

- A. Trowelable Leveling and Patching Compounds: Latex-modified, Portland cement based or blended hydraulic-cement based formulation provided or approved by manufacturer for applications indicated.
- B. Adhesives: Water-resistant type recommended by manufacturer to suit resilient products and substrate conditions indicated.
  - 1. Adhesives shall have a VOC content of 50g/L or less when calculated according to 40 CFR 59, subpart D (EPA Method 24).

## PART 3 - EXECUTION

### 3.1 EXAMINATION

- A. Examine substrates, with Installer present, for compliance with requirements for maximum moisture content and other conditions affecting performance of the Work.

- B. Verify that finishes of substrates comply with tolerances and other requirements specified in other Sections and that substrates are free of cracks, ridges, depressions, scale, and foreign deposits that might interfere with adhesion of floor tile.
- C. Proceed with installation only after unsatisfactory conditions have been corrected.

### 3.2 PREPARATION

- A. Prepare substrates according to manufacturer's written instructions to ensure adhesion of resilient products.
- B. Fill cracks, holes, and depressions in substrates with trowelable leveling and patching compound and remove bumps and ridges to produce a uniform and smooth substrate.
- C. Do not install resilient products until they are same temperature as space where they are to be installed.
  - 1. Move resilient products and installation materials into spaces where they will be installed at least 48 hours in advance of installation.
- D. Sweep and vacuum clean substrates to be covered by resilient products immediately before installation.

### 3.3 RESILIENT BASE INSTALLATION

- A. Comply with manufacturer's written instructions for installing resilient base.
- B. Install resilient base in lengths as long as practicable without gaps at seams and with tops of adjacent pieces aligned.
- C. Tightly adhered resilient base to substrate throughout length of each piece, with base in continuous contact with horizontal and vertical substrates.
- D. Do not stretch resilient base during installation.
- E. On masonry surfaces or other similar irregular substrates, fill voids along top edge of resilient base with manufacturer's recommended adhesive filler material.
- F. Job-Formed Corners:
  - 1. Outside Corners: Use straight pieces of maximum lengths possible form without producing discoloration (whitening) at bends.
  - 2. Inside Corners: Use straight pieces of maximum lengths possible.

### 3.4 RESILIENT ACCESSORY INSTALLATION

- A. Comply with manufacturer's written instructions for installing resilient accessories.
- B. Resilient Molding Accessories: Butt to adjacent materials and tightly adhere to substrates throughout length of each piece. Install reducer stripes at edges of (carpet) (resilient floor covering) that would otherwise be exposed.

3.5 CLEANING AND PROTECTION

- A. Comply with manufacturer's written instructions for cleaning and protection of resilient products.
- B. Perform the following operations immediately after completing resilient product:
  - 1. Remove adhesive and other blemishes from exposed surfaces.
  - 2. Sweep and vacuum surfaces thoroughly.
  - 3. Damp-mop surfaces to remove marks and soil.
- C. Protect resilient products from mars, marks, indentations, and other damage from construction operations and placement of equipment and fixtures during remainder of construction period.

END OF SECTION 09 6513

## SECTION 09 6813 – CARPET TILE

### PART 1 - GENERAL

#### 1.1 SUMMARY

- A. Section includes Modular Carpet Tile.

#### 1.2 ACTION SUBMITTALS

- A. Product Data: For each type of product.
  - 1. Include manufacturer's written data on physical characteristics, durability, and fade resistance.
  - 2. Include installation recommendations for each type of substrate.
- B. Samples: For each of the following products and for each color and texture required. Label each Sample with manufacturer's name, material description, color, pattern, and designation indicated on Drawings and in schedules.
  - 1. Carpet Tile: Full-size Sample for initial selection.

#### 1.3 INFORMATIONAL SUBMITTALS

- A. Qualification Data: For Installer.
- B. Sample Warranty: For special warranty.

#### 1.4 CLOSEOUT SUBMITTALS

- A. Maintenance Data: For carpet tiles to include in maintenance manuals. Include the following:
  - 1. Methods for maintaining carpet tile, including cleaning and stain-removal products and procedures and manufacturer's recommended maintenance schedule.
  - 2. Precautions for cleaning materials and methods that could be detrimental to carpet tile.

#### 1.5 MAINTENANCE MATERIAL SUBMITTALS

- A. Furnish extra materials, from the same product run, that match products installed and that are packaged with protective covering for storage and identified with labels describing contents.
  - 1. Carpet Tile: Full-size units equal to 2 percent of amount installed for each type indicated, but not less than 10 sq. yd. (8.3 sq. m) of same dye lot as installed. Contractor shall contact architect and owner when delivered and stored for verification.

#### 1.6 QUALITY ASSURANCE

- A. Installer Qualifications: An experienced installer who is certified by the International Certified Floorcovering Installers Association.
- B. Fire-Test-Response Ratings: Where indicated, provide carpet tile identical to those of assemblies tested for fire response according to NFPA 253 by a qualified testing agency.

#### 1.7 DELIVERY, STORAGE, AND HANDLING

- A. Comply with CRI 104.

#### 1.8 FIELD CONDITIONS

- A. Comply with CRI 104 for temperature, humidity, and ventilation limitations.
- B. Environmental Limitations: Do not deliver or install carpet tiles until spaces are enclosed and weathertight, wet work in spaces is complete and dry, and ambient temperature and humidity conditions are maintained at occupancy levels during the remainder of the construction period.
- C. Do not install carpet tiles over concrete slabs until slabs have cured and are sufficiently dry to bond with adhesive and concrete slabs have pH range recommended by carpet tile manufacturer.
- D. Where demountable partitions or other items are indicated for installation on top of carpet tiles, install carpet tiles before installing these items.

#### 1.9 WARRANTY

- A. Special Warranty for Carpet Tiles: Manufacturer agrees to repair or replace components of carpet tile installation that fail in materials or workmanship within specified warranty period.
  - 1. Warranty does not include deterioration or failure of carpet tile due to unusual traffic, failure of substrate, vandalism, or abuse.
  - 2. Failures include, but are not limited to, more than 10 percent edge raveling, snags, runs, excess static discharge, loss of tuft bind strength, loss of face fiber, and delamination.
  - 3. Warranty Period: 10 years from date of Final Completion.

### PART 2 - PRODUCTS

#### 2.1 TILE CARPETING

- A. Manufacturer: Subject to compliance with requirements, provide the following Basis of Design:
  - 1. J+J Flooring - Kinetex
    - a. Network 1842 – 2855 Encryption
  - 2. Construction: Textile Composite
  - 3. Wear Layer: Polyester – Applied Pattern
  - 4. Standard Backing: Kinetex Felt Cushion
  - 5. Dye Method: 100% Solution Dyed
  - 6. Total Thickness: 0.205 inches
  - 7. Size: 24 by 24 inches



8. Installation: Brick

B. Performance Characteristics: As follows:

1. ASTM E-648 / NFPA 253: Class 1 (CRF: 0.45 watts/sq cm or greater)
2. Federal Flammability: CPSC FF 1-70: Passes
3. Smoke Density: ASTM E-662 / NFPA 258:  $\leq 450$  Flaming Mode
4. Electrostatic Propensity: AATCC 134 (Step & Scuff): 3.0 kV or less
5. Static Coefficient of Friction: ASTM C-1028: Passes ADA Requirements for Accessible Routes (minimum 0.60)
6. Delamination of Secondary Backing of Pile Floor Coverings: ASTM D-3936: No Delamination
7. Lightfastness:  $\geq 4$  @ 100 hours if solution dyed >> <<AATCC 16E
8. Dimensional Stability: Aachen / ISO 2551: Maximum Change +/- 0.149%
9. Moisture Barrier: Moisture Penetration by Impact @ 10 psi: No Penetration of backing after 10,000 impacts.

2.2 INSTALLATION MATERIALS

- A. Trowelable Leveling and Patching Compounds: Latex-modified, hydraulic-cement-based formulation provided or recommended by carpet tile manufacturer.
- B. Adhesives: Water-resistant, mildew-resistant, nonstaining, pressure-sensitive type to suit products and subfloor conditions indicated, that complies with flammability requirements for installed carpet tile and is recommended by carpet tile manufacturer for releasable installation.
  1. Adhesives shall have a VOC content of 50 g/L or less when calculated according to 40 CFR 59, Subpart D (EPA Method 24).
  2. Adhesives shall comply with the testing and product requirements of the California Department of Health Services' "Standard Practice for the Testing of Volatile Organic Emissions from Various Sources Using Small-Scale Environmental Chambers."

PART 3 - EXECUTION

3.1 EXAMINATION

- A. Examine substrates, areas, and conditions, with Installer present, for compliance with requirements for maximum moisture content, alkalinity range, installation tolerances, and other conditions affecting carpet tile performance. Examine carpet tile for type, color, pattern, and potential defects.
- B. Concrete Subfloors: Verify that concrete slabs comply with ASTM F 710 and the following:
  1. Slab substrates are dry and free of curing compounds, sealers, hardeners, and other materials that may interfere with adhesive bond. Determine adhesion and dryness characteristics by performing bond and moisture tests recommended by carpet tile manufacturer.
  2. Subfloor finishes comply with requirements specified in Division 03 Section "Cast-in-Place Concrete" for slabs receiving carpet tile.
  3. Subfloors are free of cracks, ridges, depressions, scale, and foreign deposits.
- C. Proceed with installation only after unsatisfactory conditions have been corrected.

### 3.2 PREPARATION

- A. General: Comply with CRI 104, Section 6.2, "Site Conditions; Floor Preparation," and with carpet tile manufacturer's written installation instructions for preparing substrates indicated to receive carpet tile installation.
- B. Use trowelable leveling and patching compounds, according to manufacturer's written instructions, to fill cracks, holes, depressions, and protrusions in substrates. Fill or level cracks, holes and depressions 1/8 inch (3 mm) wide or wider and protrusions more than 1/32 inch (0.8 mm) unless more stringent requirements are required by manufacturer's written instructions.
- C. Remove coatings, including curing compounds, and other substances that are incompatible with adhesives and that contain soap, wax, oil, or silicone, without using solvents. Use mechanical methods recommended in writing by carpet tile manufacturer.
- D. Clean metal substrates of grease, oil, soil and rust, and prime if directed by adhesive manufacturer. Rough sand painted metal surfaces and remove loose paint. Sand aluminum surfaces, to remove metal oxides, immediately before applying adhesive.
- E. Broom and vacuum clean substrates to be covered immediately before installing carpet tile.

### 3.3 INSTALLATION

- A. General: Comply with CRI 104, Section 14, "Carpet Modules," and with carpet tile manufacturer's written installation instructions.
- B. Maintain dye lot integrity. Do not mix dye lots in same area.
- C. Cut and fit carpet tile to butt tightly to vertical surfaces, permanent fixtures, and built-in furniture including cabinets, pipes, outlets, edgings, thresholds, and nosings. Bind or seal cut edges as recommended by carpet tile manufacturer.
- D. Extend carpet tile into toe spaces, door reveals, closets, open-bottomed obstructions, removable flanges, alcoves, and similar openings.
- E. Maintain reference markers, holes, and openings that are in place or marked for future cutting by repeating on finish flooring as marked on subfloor. Use nonpermanent, non-staining marking device.

### 3.4 CLEANING AND PROTECTION

- A. Perform the following operations immediately after installing carpet tile:
  - 1. Vacuum carpet tile using commercial machine with face-beater element.
- B. Protect installed carpet tile to comply with CRI 104, Section 16, "Protecting Indoor Installations."
- C. Protect carpet tile against damage from construction operations and placement of equipment and fixtures during the remainder of construction period. Use protection methods indicated or recommended in writing by carpet tile manufacturer.

END OF SECTION 09 6813

## SECTION 102600 - WALL PROTECTION

### PART 1 - GENERAL

#### 1.1 RELATED DOCUMENTS

- A. Drawings and general provisions of the Contract, including General and Supplementary Conditions and Division 01 Specification Sections, apply to this Section.

#### 1.2 SUMMARY

- A. Section Includes:

- 1. Corner guards.

#### 1.3 ACTION SUBMITTALS

- A. Product Data: For each type of product.

- 1. Include construction details, material descriptions, impact strength, dimensions of individual components and profiles, and finishes.

- B. Samples for Verification: For each type of exposed finish on the following products, prepared on Samples of size indicated below:

- 1. Corner Guards: 12 inches long.

#### 1.4 INFORMATIONAL SUBMITTALS

- A. Material Certificates: For each type of exposed plastic material.

- B. Sample Warranty: For special warranty.

#### 1.5 CLOSEOUT SUBMITTALS

- A. Maintenance Data: For each type of wall and door protection product to include in maintenance manuals.

- 1. Include recommended methods and frequency of maintenance for maintaining best condition of plastic covers under anticipated traffic and use conditions. Include precautions against using cleaning materials and methods that may be detrimental to finishes and performance.

#### 1.6 MAINTENANCE MATERIAL SUBMITTALS

- A. Furnish extra materials, from the same product run, that match products installed and that are packaged with protective covering for storage and identified with labels describing contents.

- 1. Corner-Guard Covers: Full-size plastic covers of maximum length equal to 2 percent of each type, color, and texture of cover installed, but no fewer than two, 96-inch- long units.
  - 2. Mounting and Accessory Components: Amounts proportional to the quantities of extra materials. Package mounting and accessory components with each extra material.

#### 1.7 DELIVERY, STORAGE, AND HANDLING

- A. Store wall and door protection in original undamaged packages and containers inside well-ventilated area protected from weather, moisture, soiling, extreme temperatures, and humidity.

- 1. Maintain room temperature within storage area at not less than 70 deg F during the period plastic materials are stored.

2. Keep plastic materials out of direct sunlight.
3. Store plastic wall- and door-protection components for a minimum of 72 hours, or until plastic material attains a minimum room temperature of 70 deg F.
  - a. Store corner-guard covers in a vertical position.

## 1.8 WARRANTY

- A. Special Warranty: Manufacturer agrees to repair or replace components of wall- and door-protection units that fail in materials or workmanship within specified warranty period.
  1. Failures include, but are not limited to, the following:
    - a. Structural failures including detachment of components from each other or from the substrates, delamination, and permanent deformation beyond normal use.
    - b. Deterioration of metals, metal finishes, plastics, and other materials beyond normal use.
  2. Warranty Period: Five years from date of Substantial Completion.

## PART 2 - PRODUCTS

### 2.1 MANUFACTURERS

- A. Source Limitations: Obtain wall- and door-protection products of each type from single source from single manufacturer.

### 2.2 PERFORMANCE REQUIREMENTS

- A. Surface Burning Characteristics: Comply with ASTM E 84 or UL 723; testing by a qualified testing agency. Identify products with appropriate markings of applicable testing agency.
  1. Flame-Spread Index: 25 or less.
  2. Smoke-Developed Index: 450 or less.
- B. Regulatory Requirements: Comply with applicable provisions in the U.S. Architectural & Transportation Barriers Compliance Board's ADA-ABA Accessibility Guidelines for Buildings and Facilities and ICC A117.1.

### 2.3 CORNER GUARDS

- A. Surface-Mounted, Plastic-Cover Corner Guards: Manufacturer's standard, PVC free corner-guard assembly consisting of resilient plastic cover with self-adhesive tape backing; fabricated with 90-degree and custom degree turns to match wall condition.
  1. Manufacturers: Subject to compliance with requirements, provide products by one of the following:
    - a. InPro Corporation
    - b. Korogard Wall Protection Systems; a division of RJF International Corporation.
    - c. Acrovyn – VA-200N for 90-degree angles; Acrovyn VA-200MN for odd-degree angles (Basis of Design).
  2. Extruded rigid plastic, minimum 0.090-inch thickness; as follows:
    - a. Profile: Nominal 1 1/2-inch- long leg and 3/32-inch corner radius.
    - b. Height: 10 feet lengths, cut to size on site.
    - c. Color and Texture: As selected by Architect from manufacturer's full range of solid colors. Manufacturer's standard suede texture.

## 2.4 MATERIALS

- A. Plastic Materials: Chemical- and stain-resistant, high-impact-resistant plastic with integral color throughout; extruded and sheet material as required, thickness as indicated.
- B. Polycarbonate Plastic Sheet: ASTM D 6098, S-PC01, Class 1 or Class 2, abrasion resistant; with a minimum impact-resistance rating of 15 ft.-lbf/in. of notch when tested according to ASTM D 256, Test Method A.
- C. Fasteners: Aluminum, nonmagnetic stainless-steel, or other noncorrosive metal screws, bolts, and other fasteners compatible with items being fastened. Use security-type fasteners where exposed to view.
- D. Adhesive: As recommended by protection product manufacturer.

## 2.5 FABRICATION

- A. Fabricate wall and door protection according to requirements indicated for design, performance, dimensions, and member sizes, including thicknesses of components.
- B. Factory Assembly: Assemble components in factory to greatest extent possible to minimize field assembly. Disassemble only as necessary for shipping and handling.
- C. Quality: Fabricate components with uniformly tight seams and joints and with exposed edges rolled. Provide surfaces free of wrinkles, chips, dents, uneven coloration, and other imperfections. Fabricate members and fittings to produce flush, smooth, and rigid hairline joints.

## 2.6 FINISHES

- A. Protect finishes on exposed surfaces from damage by applying a strippable, temporary protective covering before shipping.
- B. Appearance of Finished Work: Noticeable variations in same piece are not acceptable. Variations in appearance of adjoining components are acceptable if they are within the range of approved Samples and are assembled or installed to minimize contrast.

# PART 3 - EXECUTION

## 3.1 EXAMINATION

- A. Examine substrates and wall areas, with Installer present, for compliance with requirements for installation tolerances, fire rating, and other conditions affecting performance of the Work.
- B. Examine walls to which wall and door protection will be attached for blocking, grounds, and other solid backing that have been installed in the locations required for secure attachment of support fasteners.
  - 1. For wall and door protection attached with adhesive, verify compatibility with and suitability of substrates, including compatibility with existing finishes or primers.
- C. Proceed with installation only after unsatisfactory conditions have been corrected.

## 3.2 PREPARATION

- A. Complete finishing operations, including painting, before installing wall and door protection.
- B. Before installation, clean substrate to remove dust, debris, and loose particles.

3.3 INSTALLATION

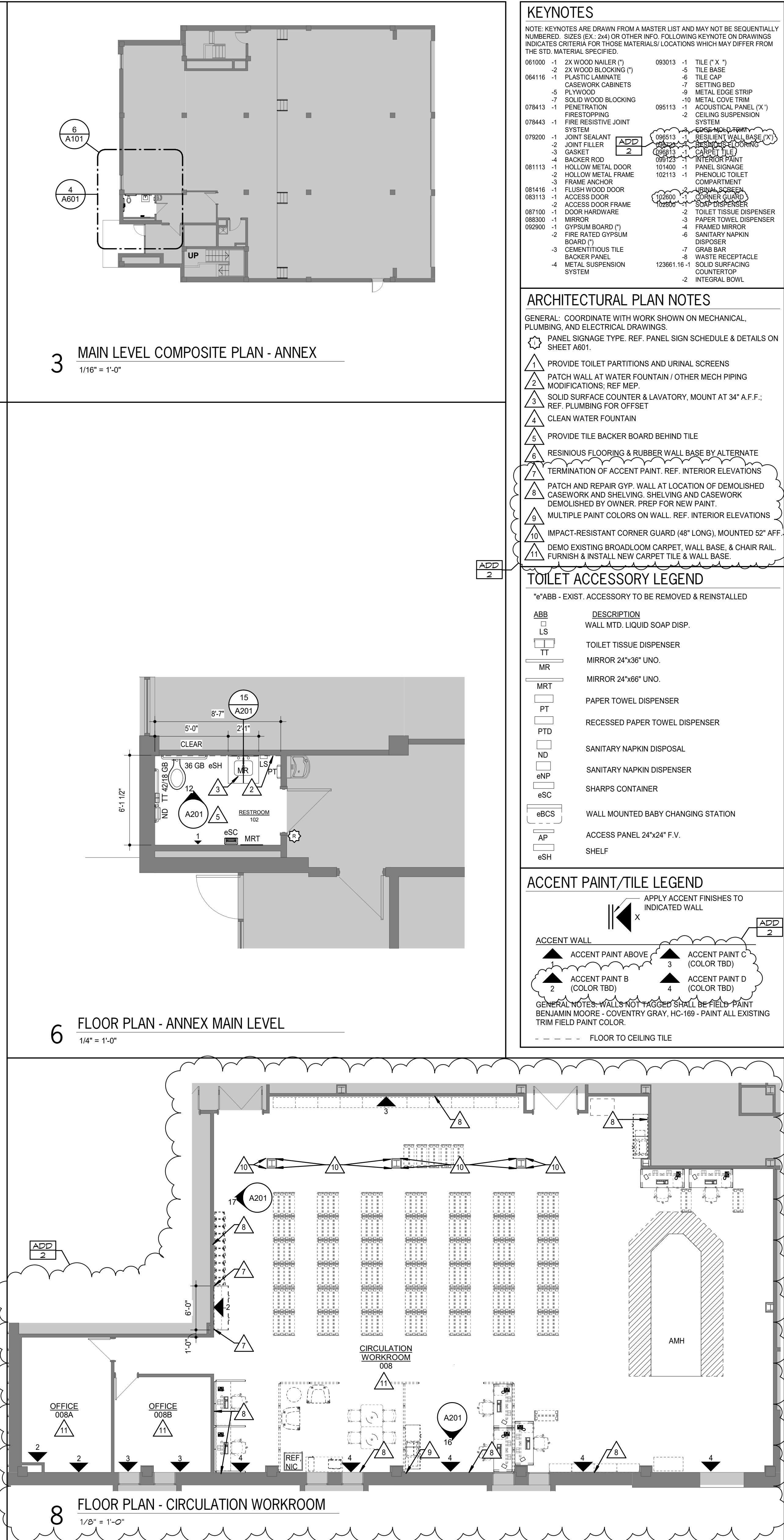
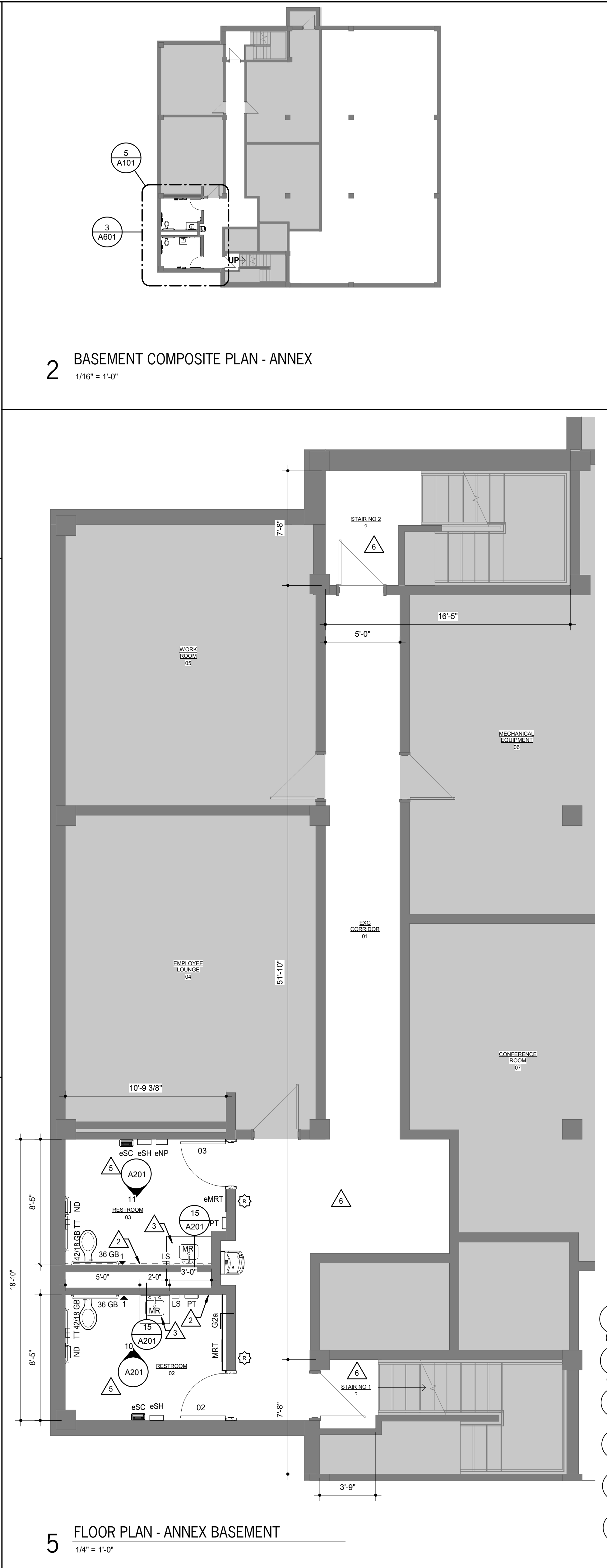
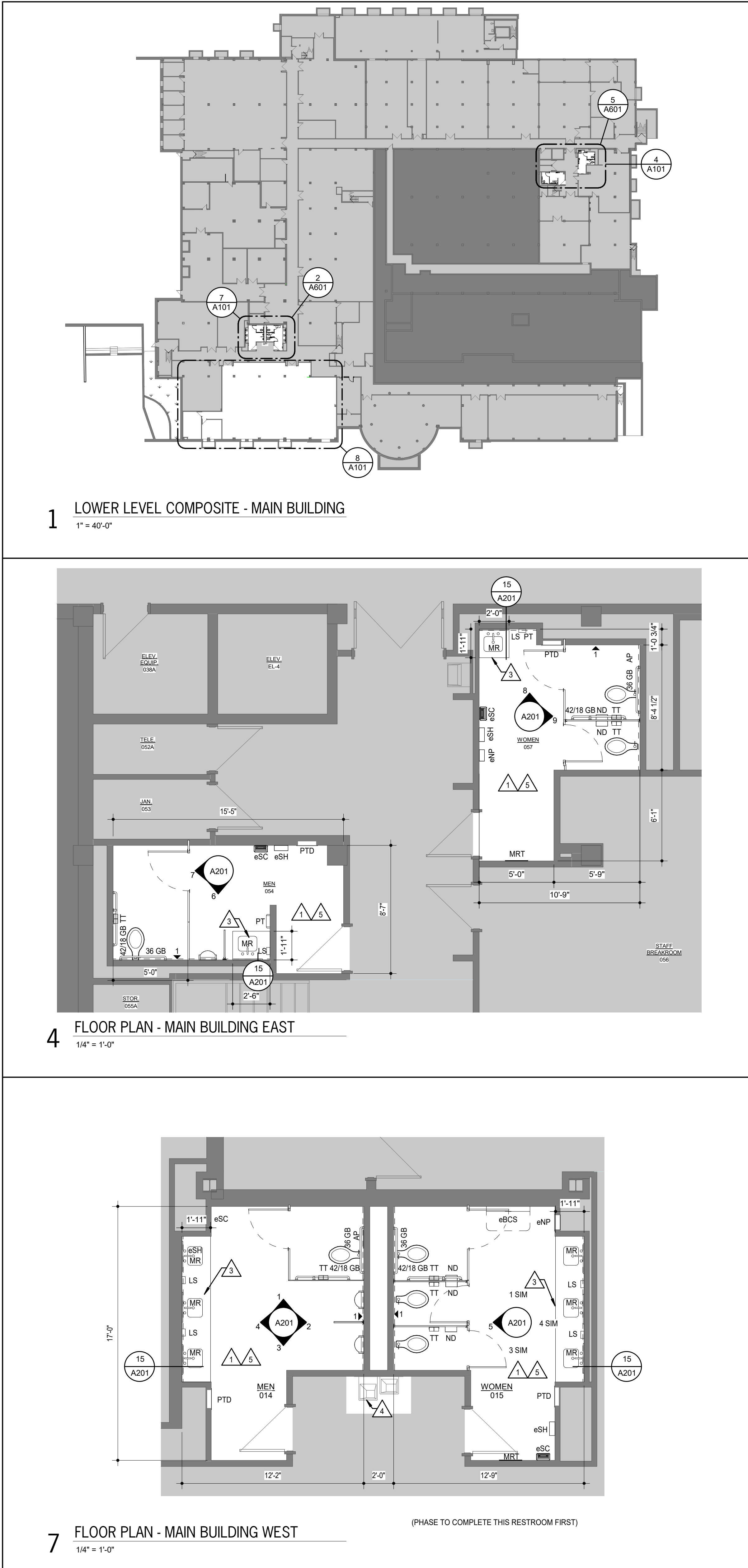
- A. Installation Quality: Install wall and door protection according to manufacturer's written instructions, level, plumb, and true to line without distortions. Do not use materials with chips, cracks, voids, stains, or other defects that might be visible in the finished Work.
- B. Accessories: Provide splices, mounting hardware, anchors, trim, joint moldings, and other accessories required for a complete installation.
  - 1. Provide anchoring devices and suitable locations to withstand imposed loads.
  - 2. Where splices occur in horizontal runs of more than 20 feet, splice aluminum retainers and plastic covers at different locations along the run, but no closer than 12 inches apart.

3.4 CLEANING

- A. Immediately after completion of installation, clean plastic covers and accessories using a standard ammonia-based household cleaning agent.
- B. Remove excess adhesive using methods and materials recommended in writing by manufacturer.

END OF SECTION 102600





**KEYNOTES**

NOTE: KEYNOTES ARE DRAWN FROM A MASTER LIST AND MAY NOT BE SEQUENTIALLY NUMBERED. SIZES (EX: 2x4) OR OTHER INFO. FOLLOWING KEYNOTE ON DRAWINGS INDICATES CRITERIA FOR THOSE MATERIALS LOCATIONS WHICH MAY DIFFER FROM THE STD. MATERIAL SPECIFIED.

061000	-1 2X WOOD NAILER (")	093013	-1 TILE (X")
-2 2X WOOD BLOCKING (")	-6 TILE BASE		
064116	-1 PLASTIC LAMINATE	-7 TILE CAP	
-1 CASEWORK CABINETS	-7 SETTING BED		
-5 PLYWOOD	-9 METAL EDGE STRIP		
-7 SOLID WOOD BLOCKING	-10 METAL COVE TRIM		
-1 PENETRATION	-11 ACOUSTICAL PANEL (X")		
078413	-1 FIRE RESISTIVE JOINT SYSTEM	095113	-2 CEILING SUSPENSION SYSTEM
078443	-1 FIRE RESISTIVE JOINT SYSTEM		
079200	-1 JOINT SEALANT		
-2 JOINT FILLER			
-3 GASKET			
-4 BACKER ROD			
081113	-1 HOLLOW METAL DOOR	101400	-1 PANEL SIGNAGE
-2 HOLLOW METAL FRAME	102113	-1 PHENOLIC TOILET COMPARTMENT	
-3 FRAME ANCHOR			
081416	-1 FLUSH WOOD DOOR	125000	-1 CORNER GUARD
083113	-1 ACCESS DOOR	125000	-1 CORNER GUARD
-2 ACCESS DOOR FRAME			
085100	-1 DOOR HARDWARE	-2 TOILET TISSUE DISPENSER	
086300	-1 MIRROR	-3 PAPER TOWEL DISPENSER	
092900	-1 GYPSUM BOARD (")	-4 FRAMED MIRROR	
-2 FIRE RATED GYPSUM BOARD (")		-5 SANITARY NAPKIN DISPOSER	
-3 BACKER PANEL		-6 WASTE RECEPTACLE	
-4 METAL SUSPENSION SYSTEM		1266116	-1 SOLID SURFACING SYSTEM
		-2 INTEGRAL BOWL	

**ARCHITECTURAL PLAN NOTES**

GENERAL: COORDINATE WITH WORK SHOWN ON MECHANICAL, PLUMBING, AND ELECTRICAL DRAWINGS.

PANEL SIGNAGE TYPE: REF. PANEL SIGN SCHEDULE & DETAILS ON SHEET A601.

PROVIDE TOILET PARTITIONS AND URINAL SCREENS.

PATCH WALL AT WATER FOUNTAIN / OTHER MECH PIPING MODIFICATIONS, REF MEP.

SOLID SURFACE COUNTER & LAVATORY, MOUNT AT 34" A.F.F.; REF. PLUMBING FOR OFFSET.

CLEAN WATER FOUNTAIN.

PROVIDE TILE BACKER BOARD BEHIND TILE.

RESINIOUS FLOORING & RUBBER WALL BASE BY ALTERNATE TERMINATION OF ACCENT PAINT. REF. INTERIOR ELEVATIONS.

PATCH AND REPAIR GYP. WALL AT LOCATION OF DEMOLISHED CASEWORK AND SHELVING. SHELVING AND CASEWORK DEMOLISHED BY OWNER. PREP FOR NEW PAINT.

MULTIPLE PAINT COLORS ON WALL. REF. INTERIOR ELEVATIONS.

IMPACT-RESISTANT CORNER GUARD (48" LONG), MOUNTED 52" AFF.

DEMO EXISTING BROADLOOM CARPET, WALL BASE, & CHAIR RAIL. FURNISH & INSTALL NEW CARPET TILE & WALL BASE.

**TOILET ACCESSORY LEGEND**

\*eABB - EXIST. ACCESSORY TO BE REMOVED & REINSTALLED

ABB	DESCRIPTION
LS	WALL MTD. LIQUID SOAP DISP.
TT	TOILET TISSUE DISPENSER
MR	MIRROR 24"x36" UNO.
MRT	MIRROR 24"x66" UNO.
PT	PAPER TOWEL DISPENSER
PTD	RECESSED PAPER TOWEL DISPENSER
ND	SANITARY NAPKIN DISPOSAL
eNP	SANITARY NAPKIN DISPENSER
eSC	SHARPS CONTAINER
eBCS	WALL MOUNTED BABY CHANGING STATION
AP	ACCESS PANEL 24"x24" F.V.
eSH	SHELF

**ACCENT PAINT/TILE LEGEND**

APPLY ACCENT FINISHES TO INDICATED WALL

▲	ACCENT PAINT ABOVE (COLOR TBD)	▲	ACCENT PAINT C (COLOR TBD)
▲	ACCENT PAINT B (COLOR TBD)	▲	ACCENT PAINT D (COLOR TBD)

GENERAL NOTES: WALLS NOT TAGGED SHALL BE FIELD PAINT BENJAMIN MOORE - COVENTRY GRAY, HC-169 - PAINT ALL EXISTING TRIM FIELD PAINT COLOR.

--- FLOOR TO CEILING TILE

**NOTES:**  
REFER TO SECTIONS AND DETAILS ON ALL OTHER SHEETS FOR APPLICABLE NOTES NOT SHOWN.

**TOPEKA & SHAWNEE COUNTY PUBLIC LIBRARY  
RESTROOM RENOVATION**

SHEET CONTENTS:  
• ARCHITECTURAL PLANS

HTK PROJECT NUMBER:  
• 2001.01-015

SHEET NUMBER:

A101



DATE:  
• March 10, 2025

REVISED DATE:  
• ADD1 - March 28, 2025  
• ADD2 - March 31, 2025

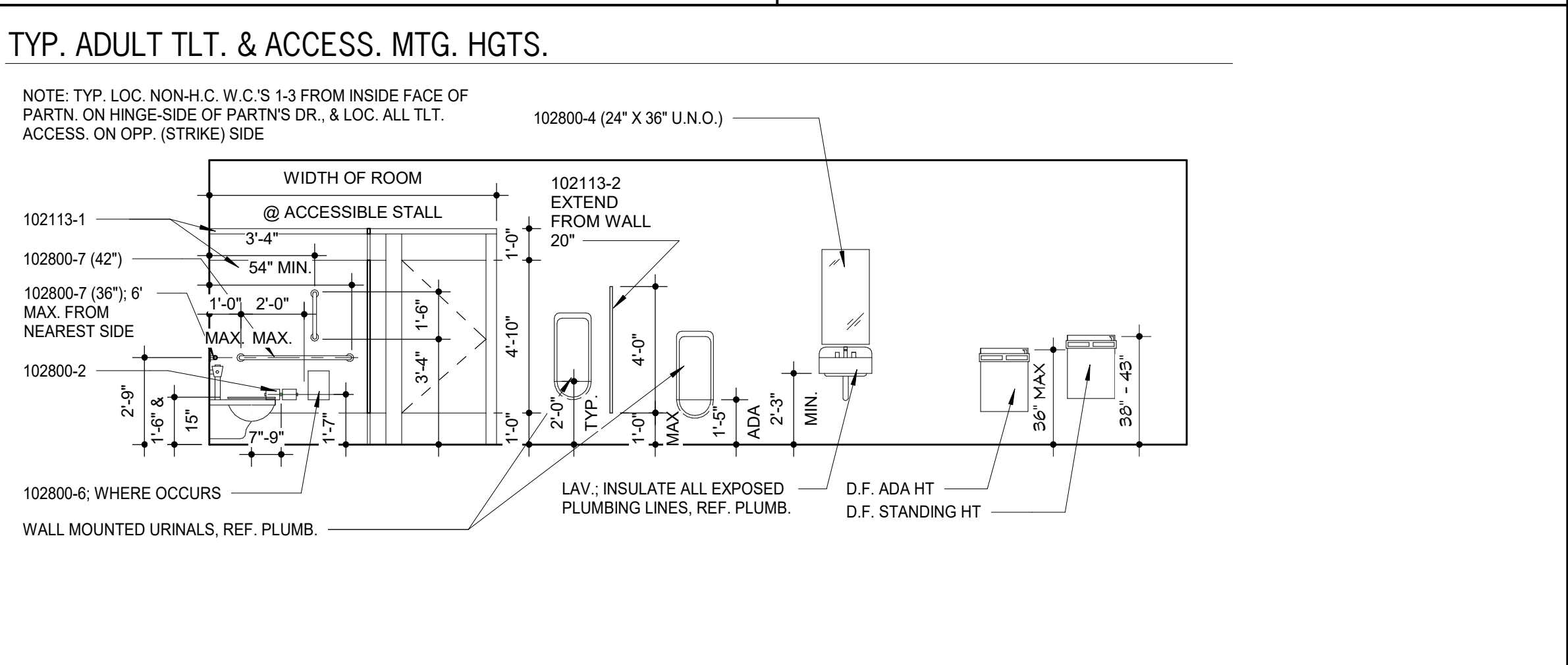
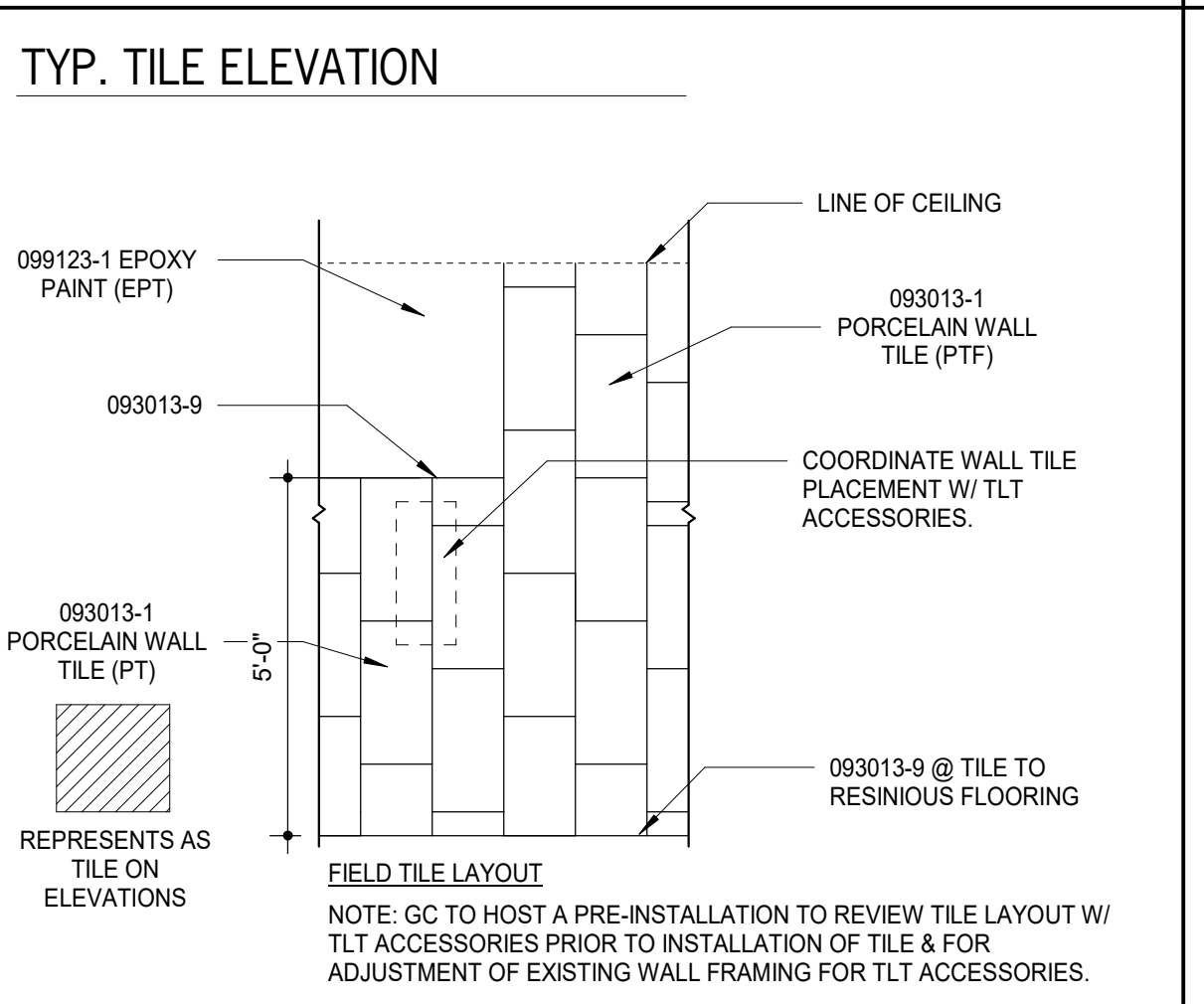
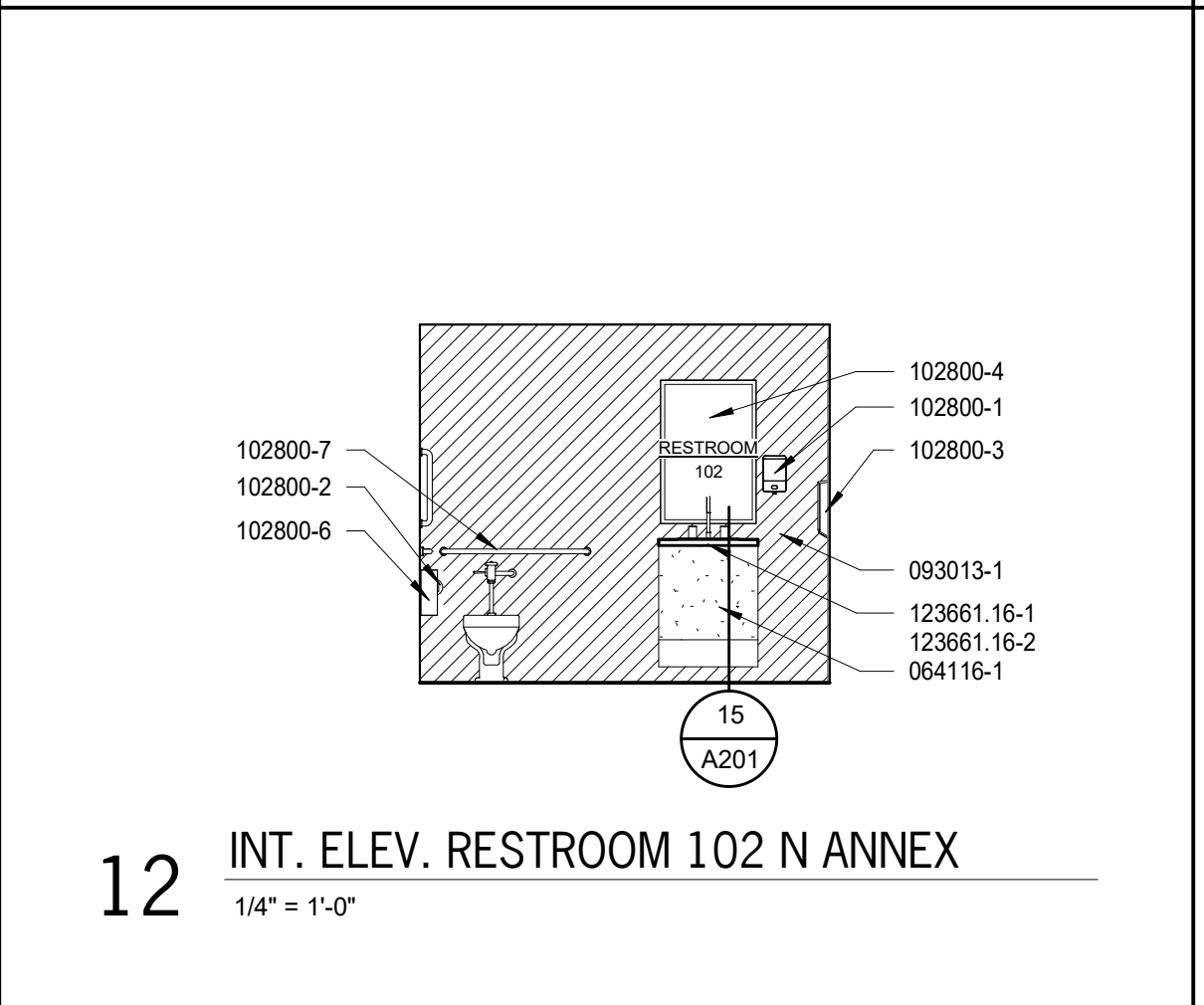
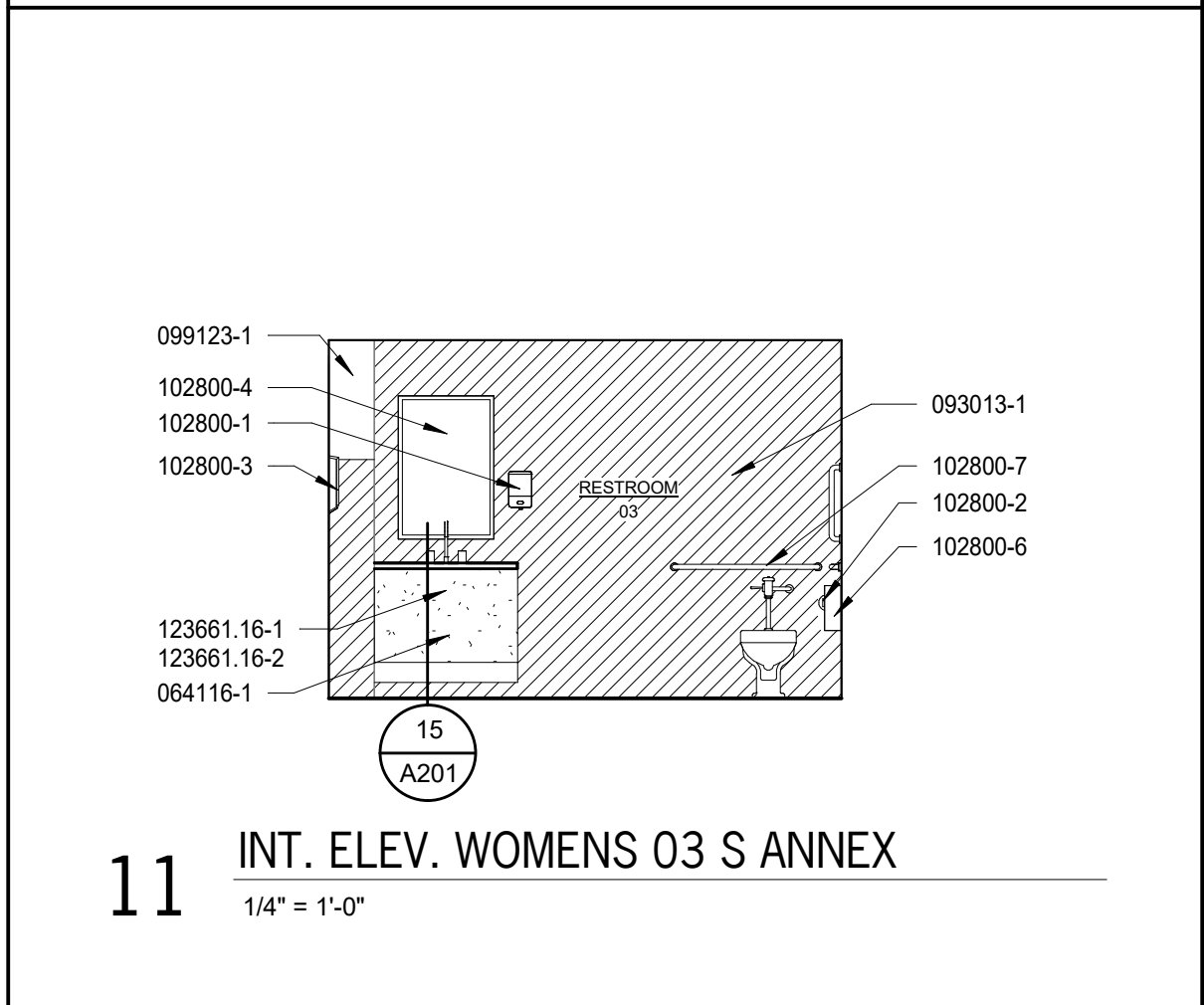
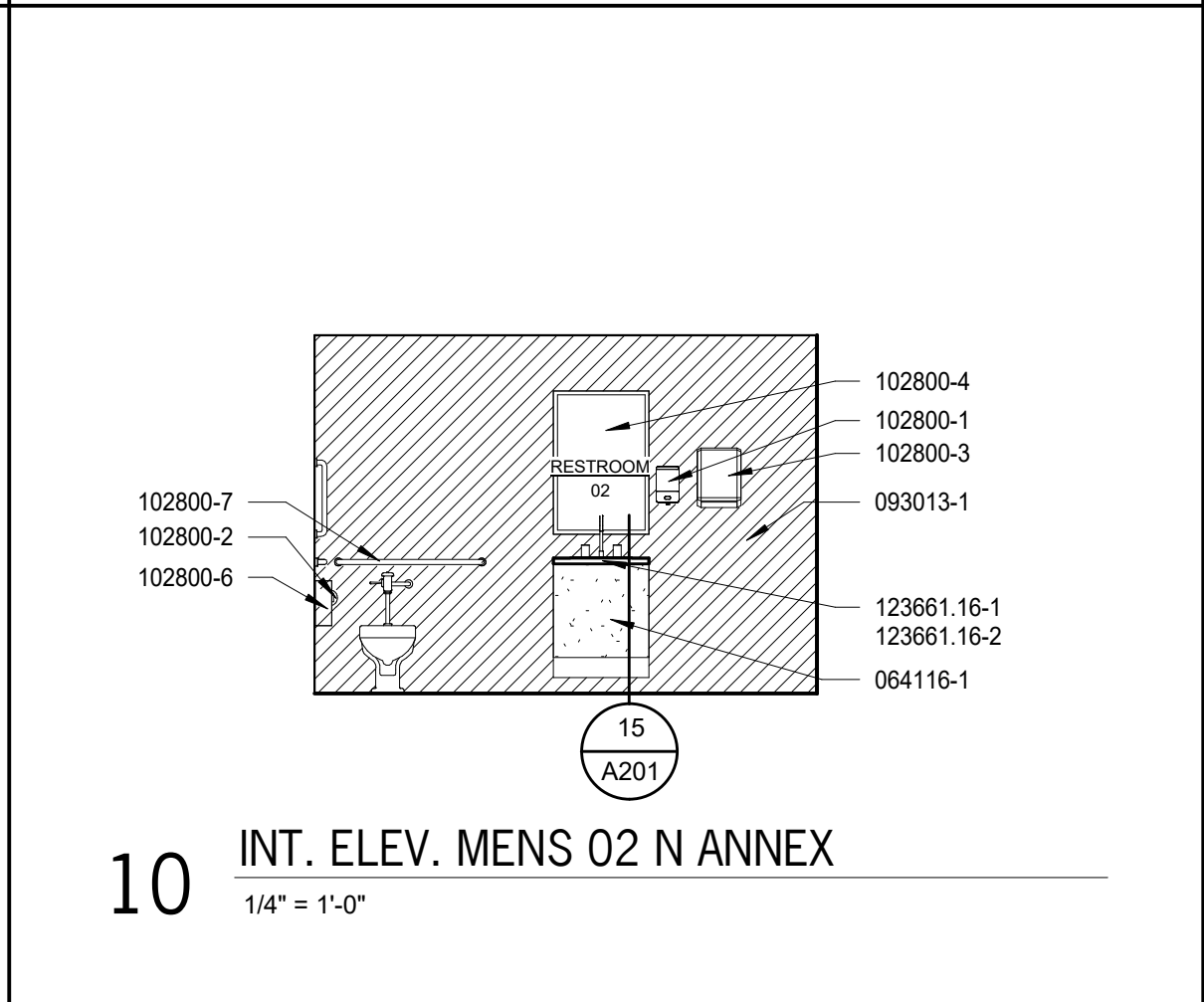
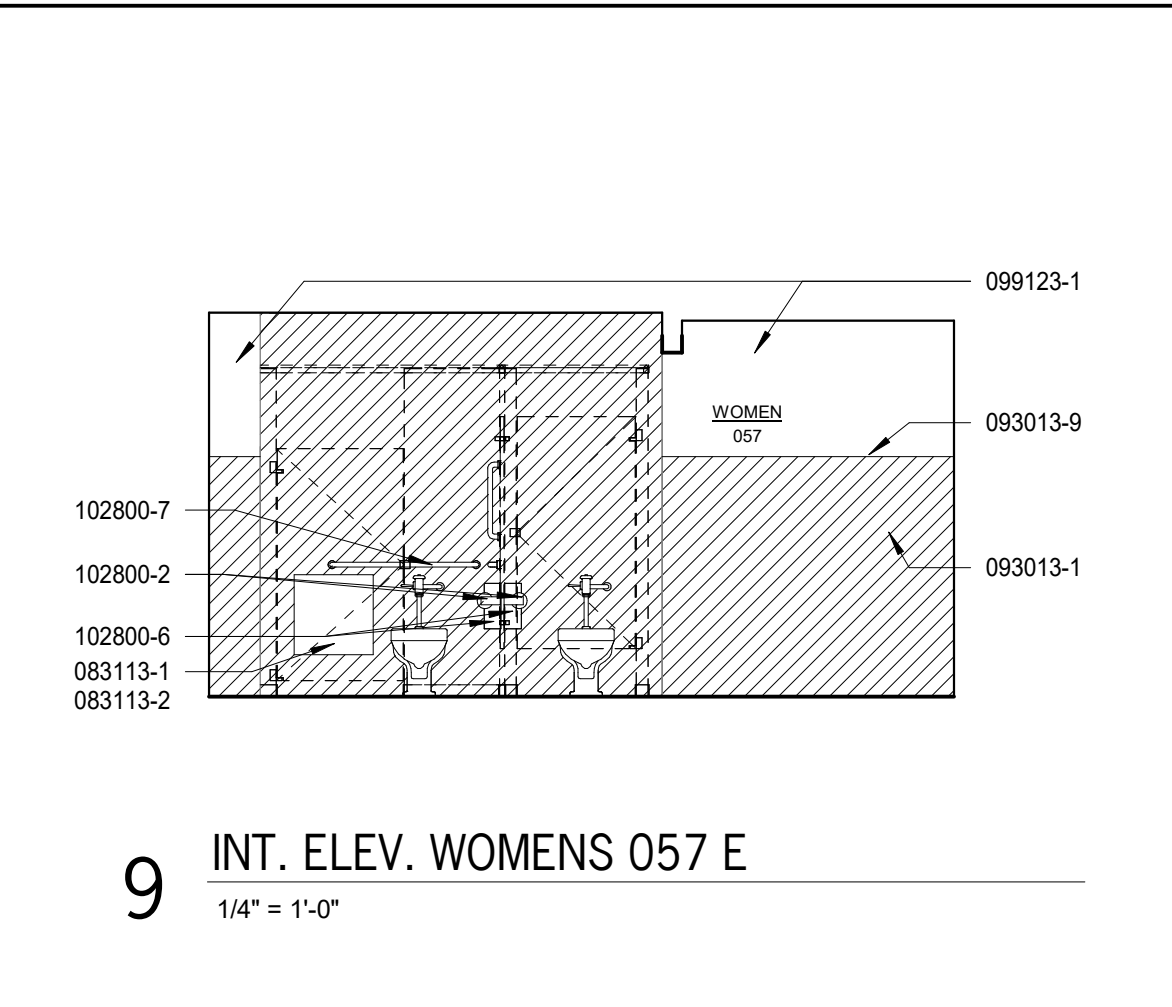
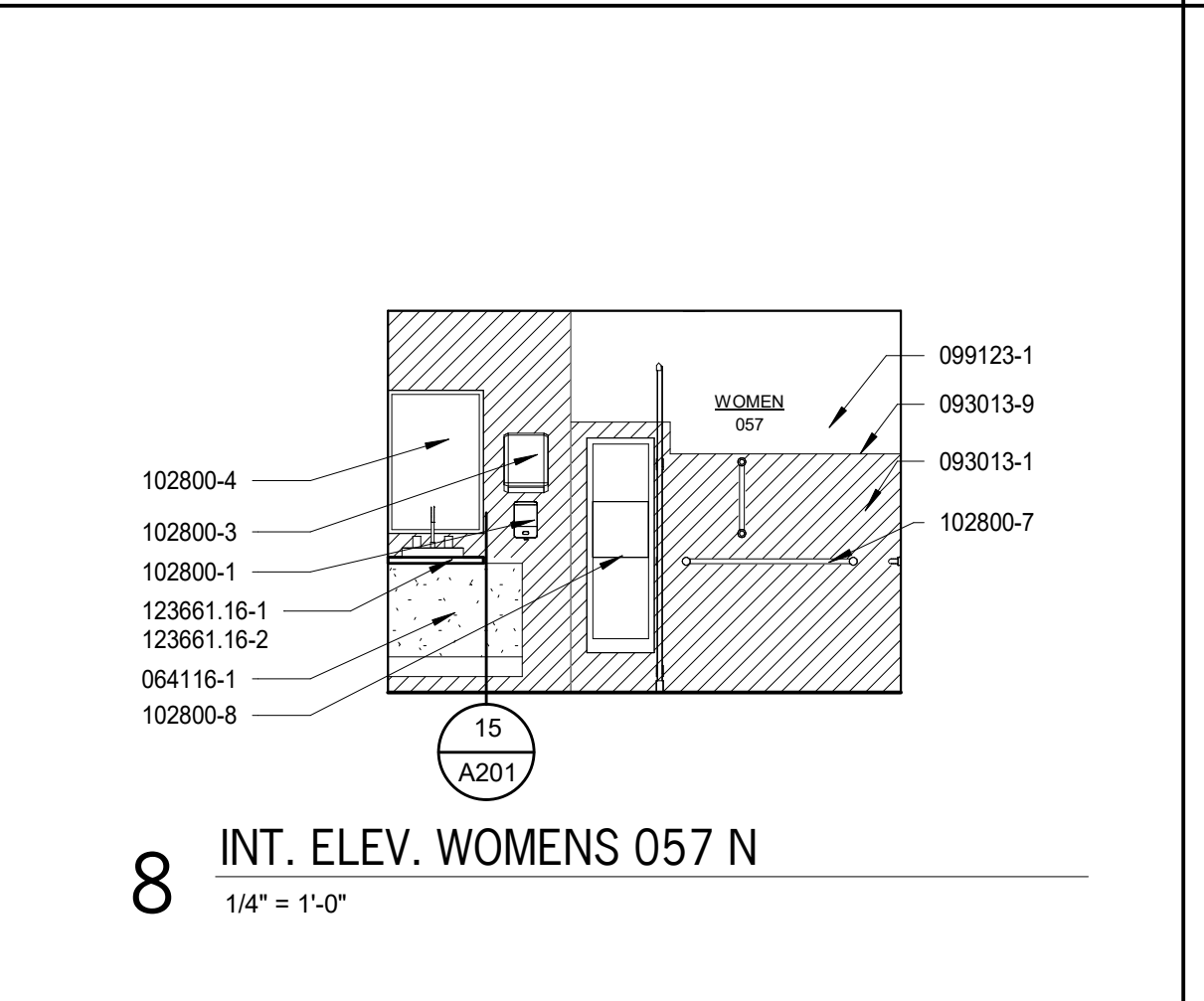
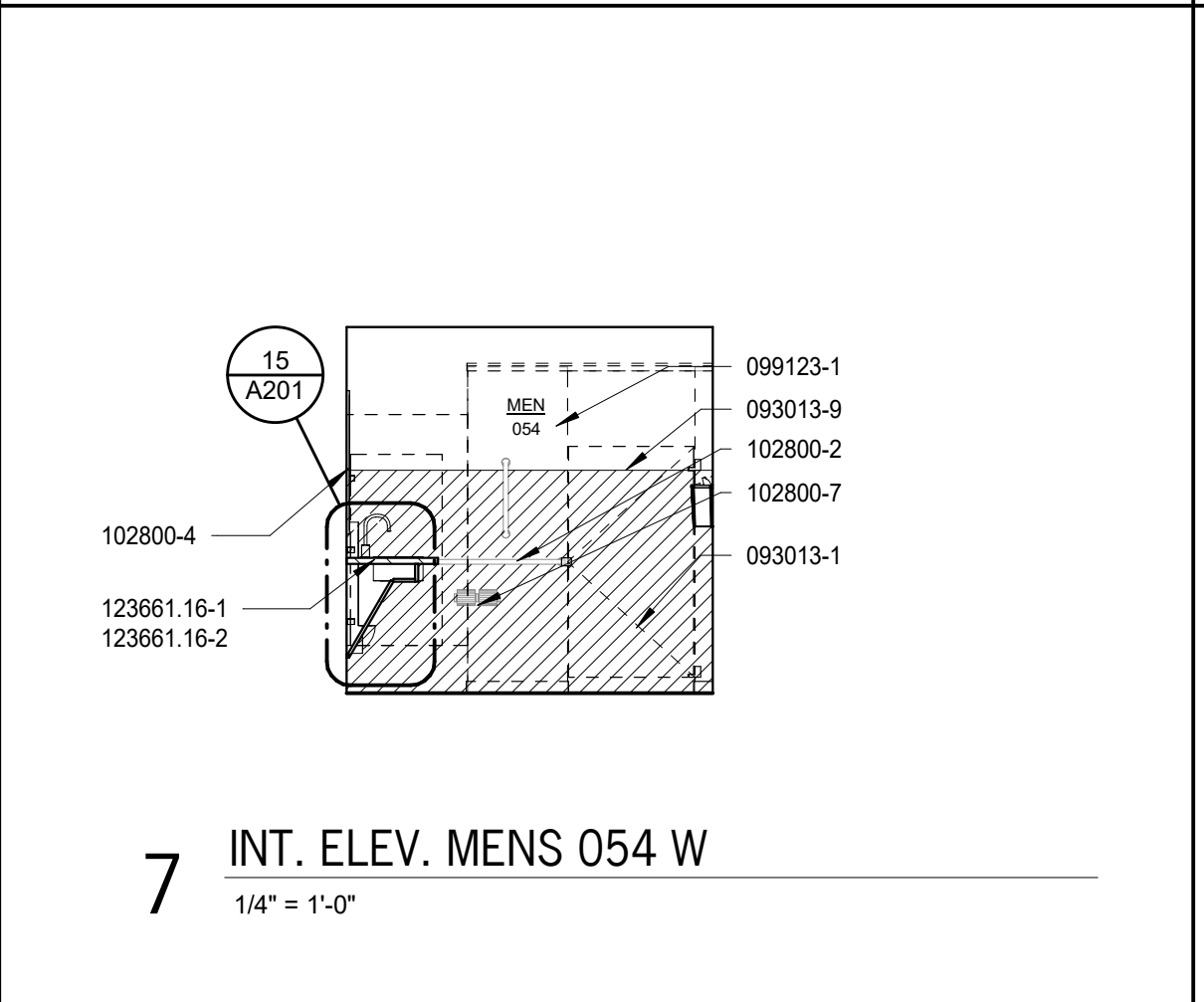
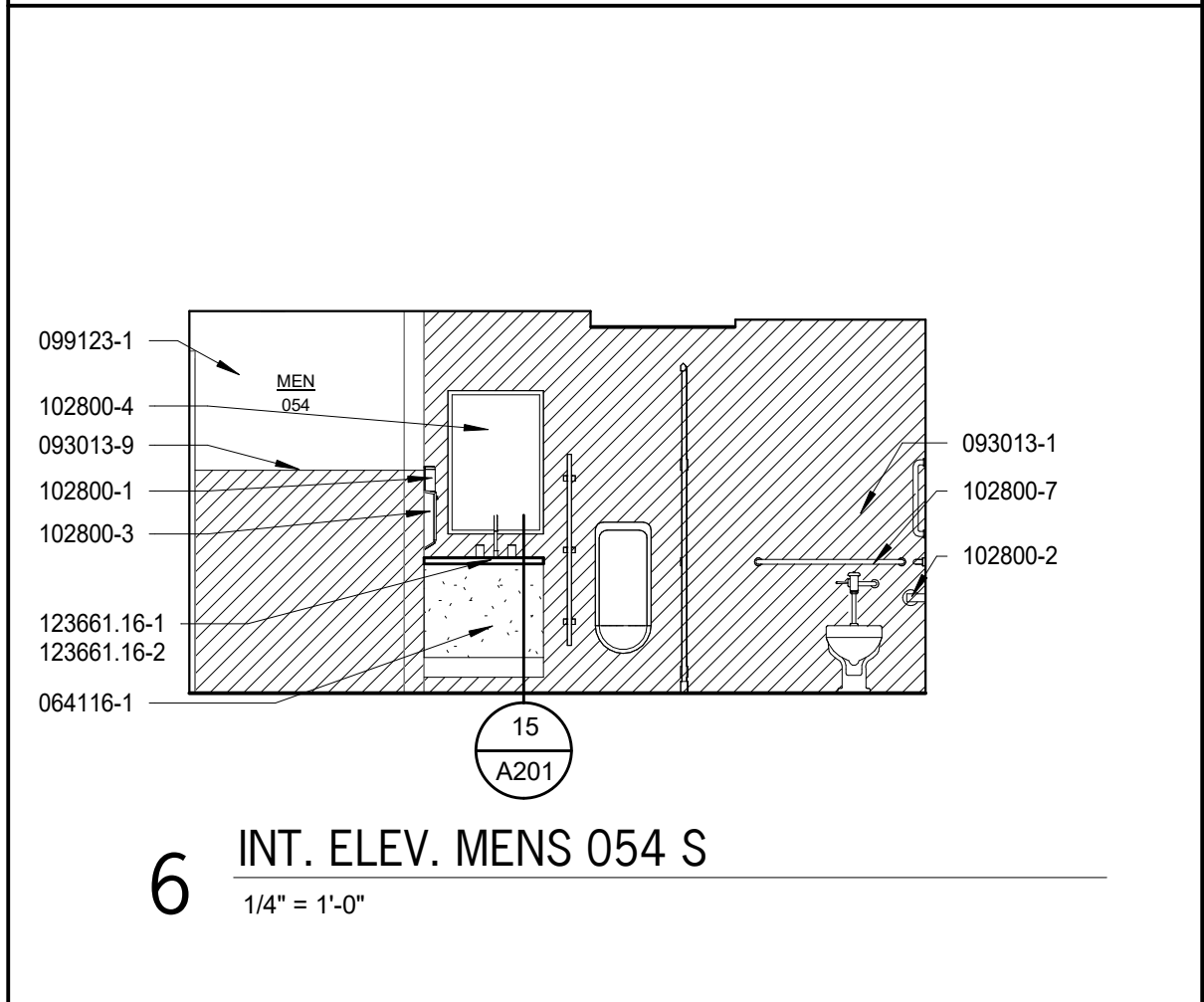
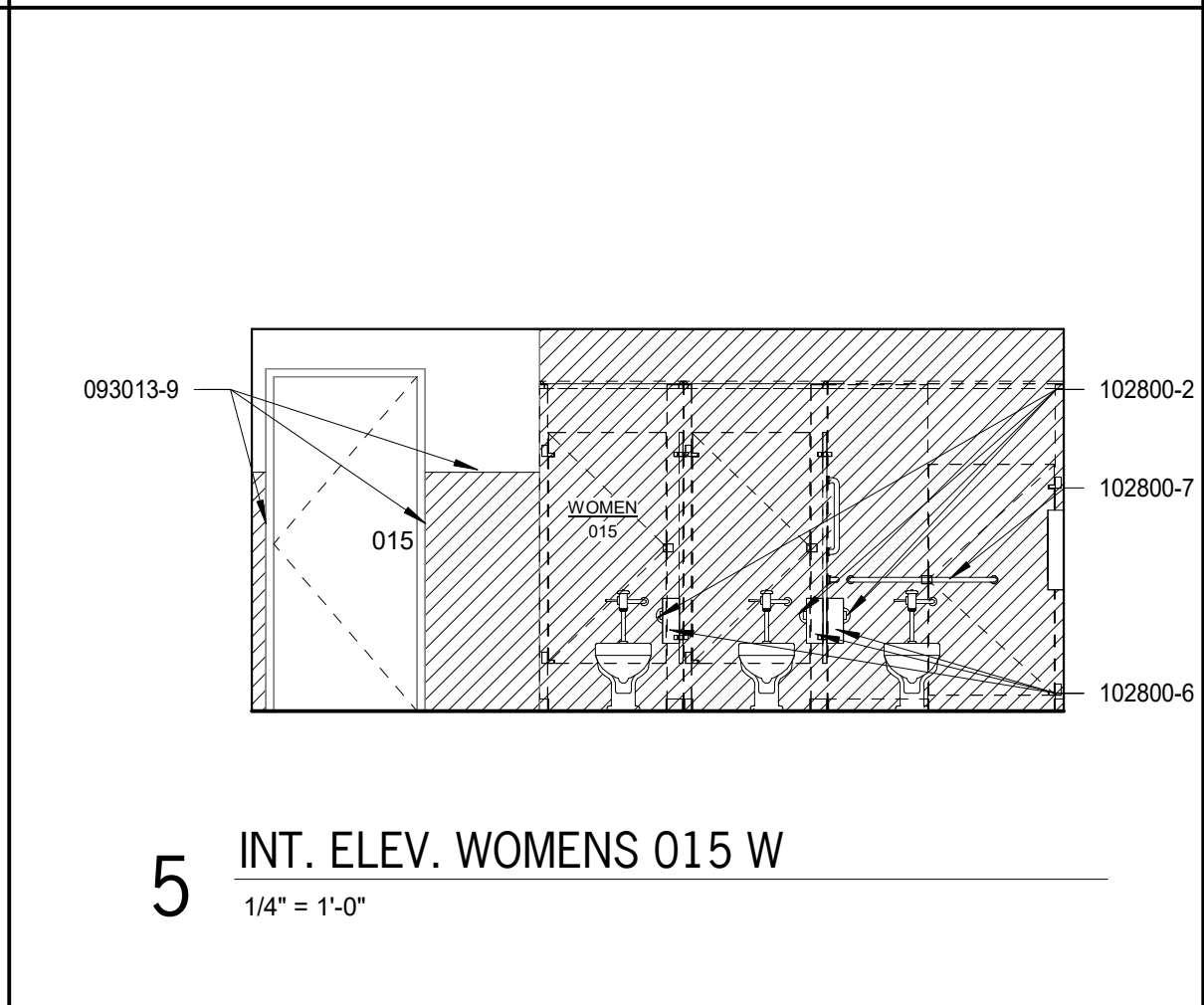
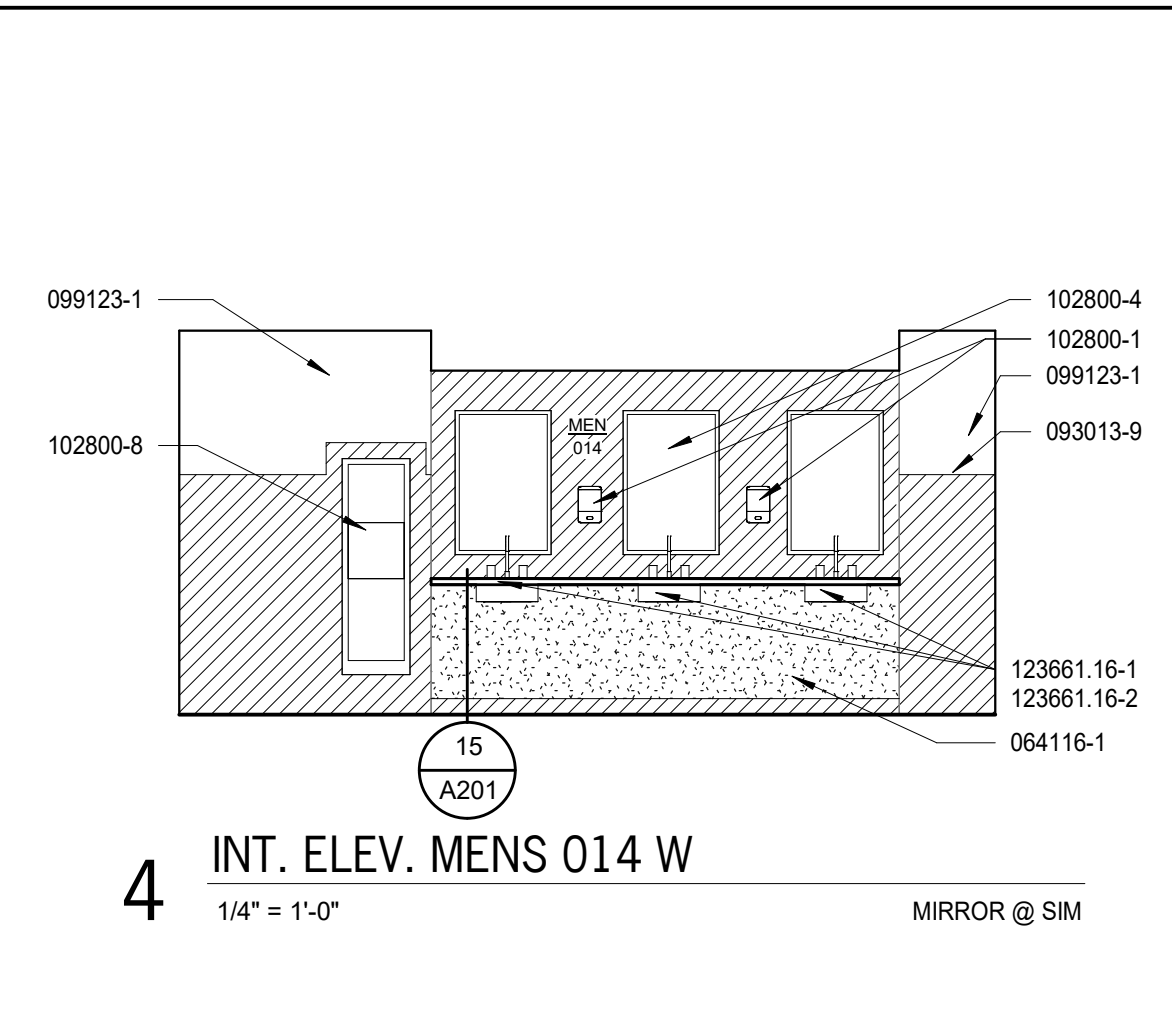
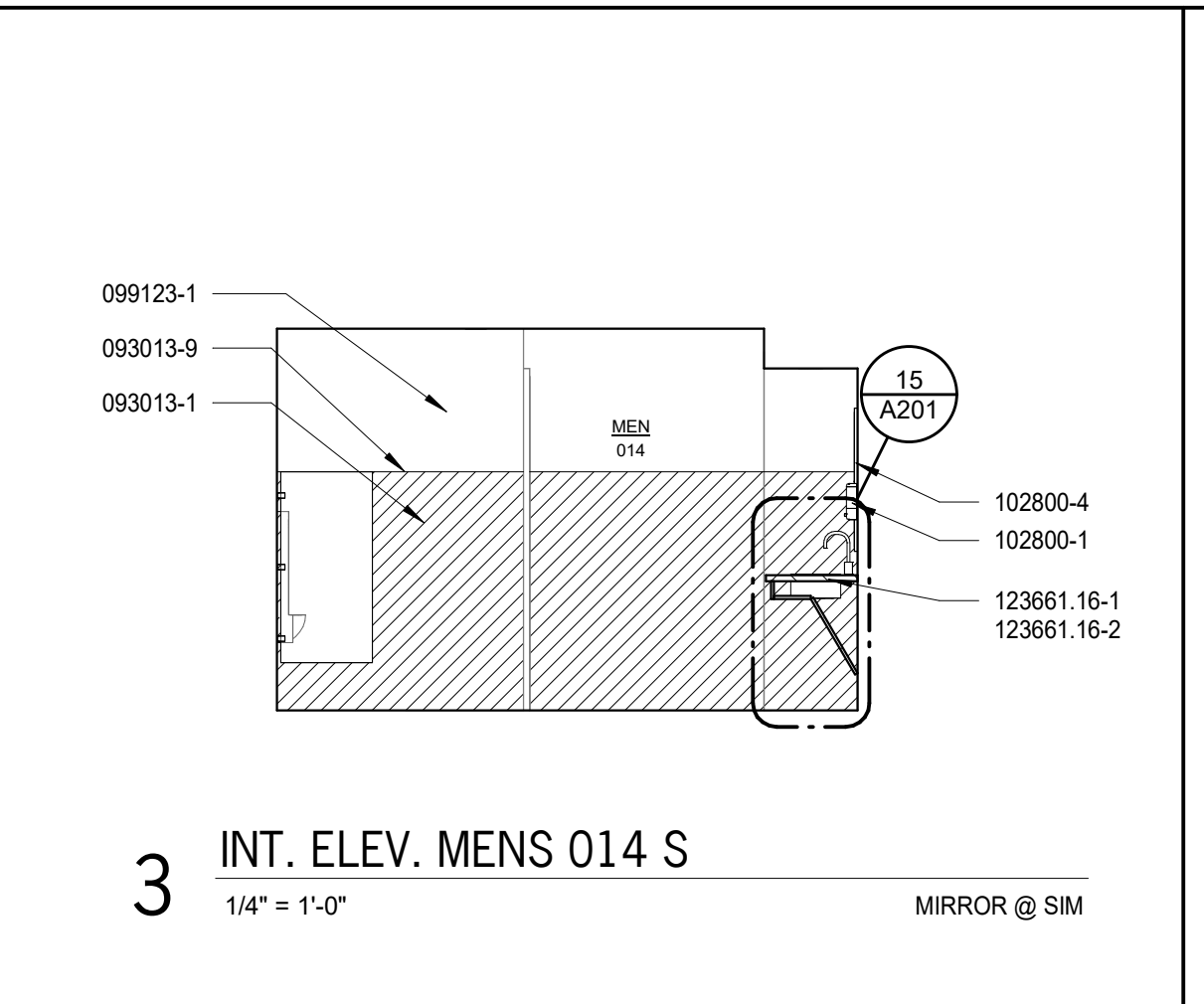
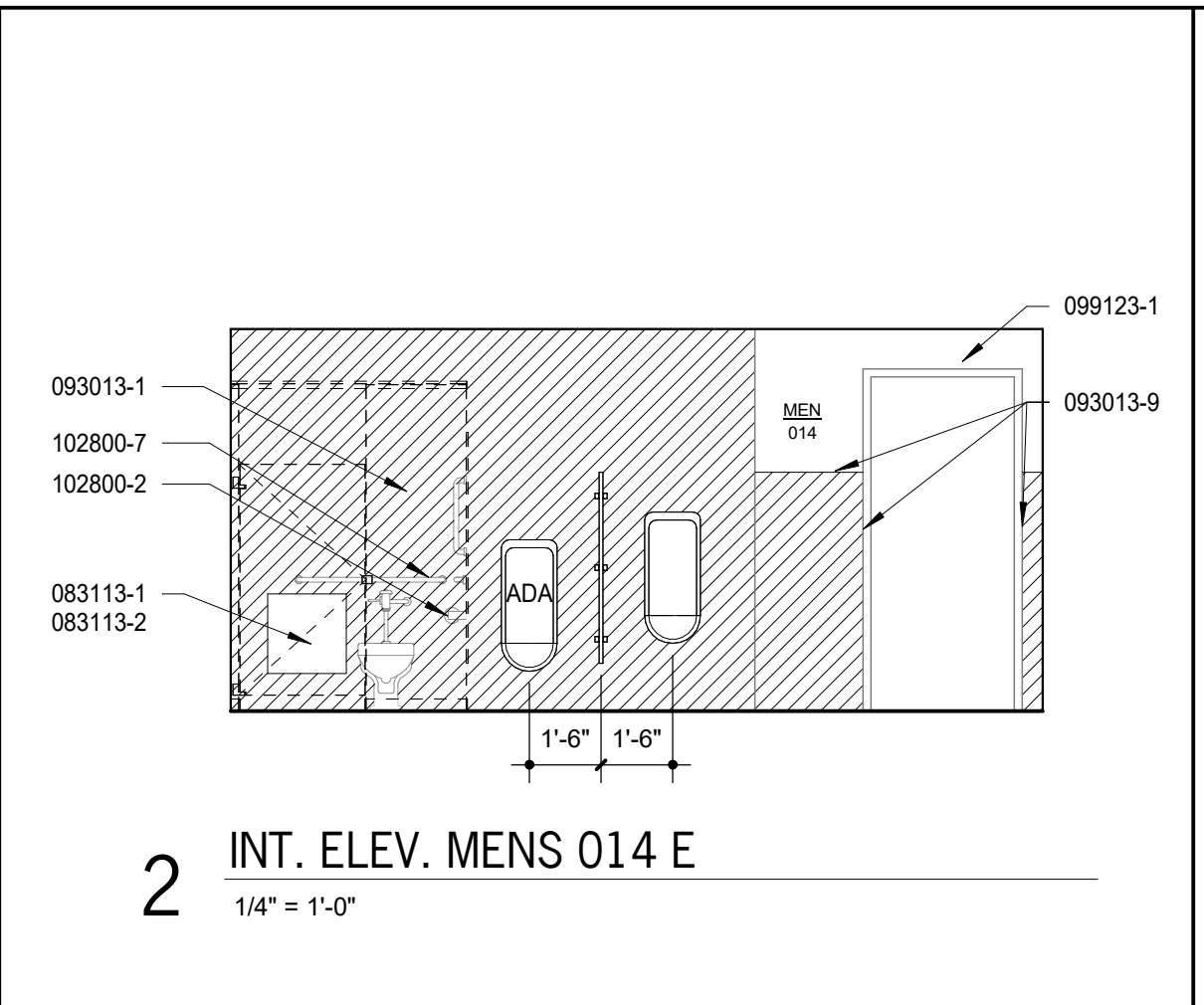
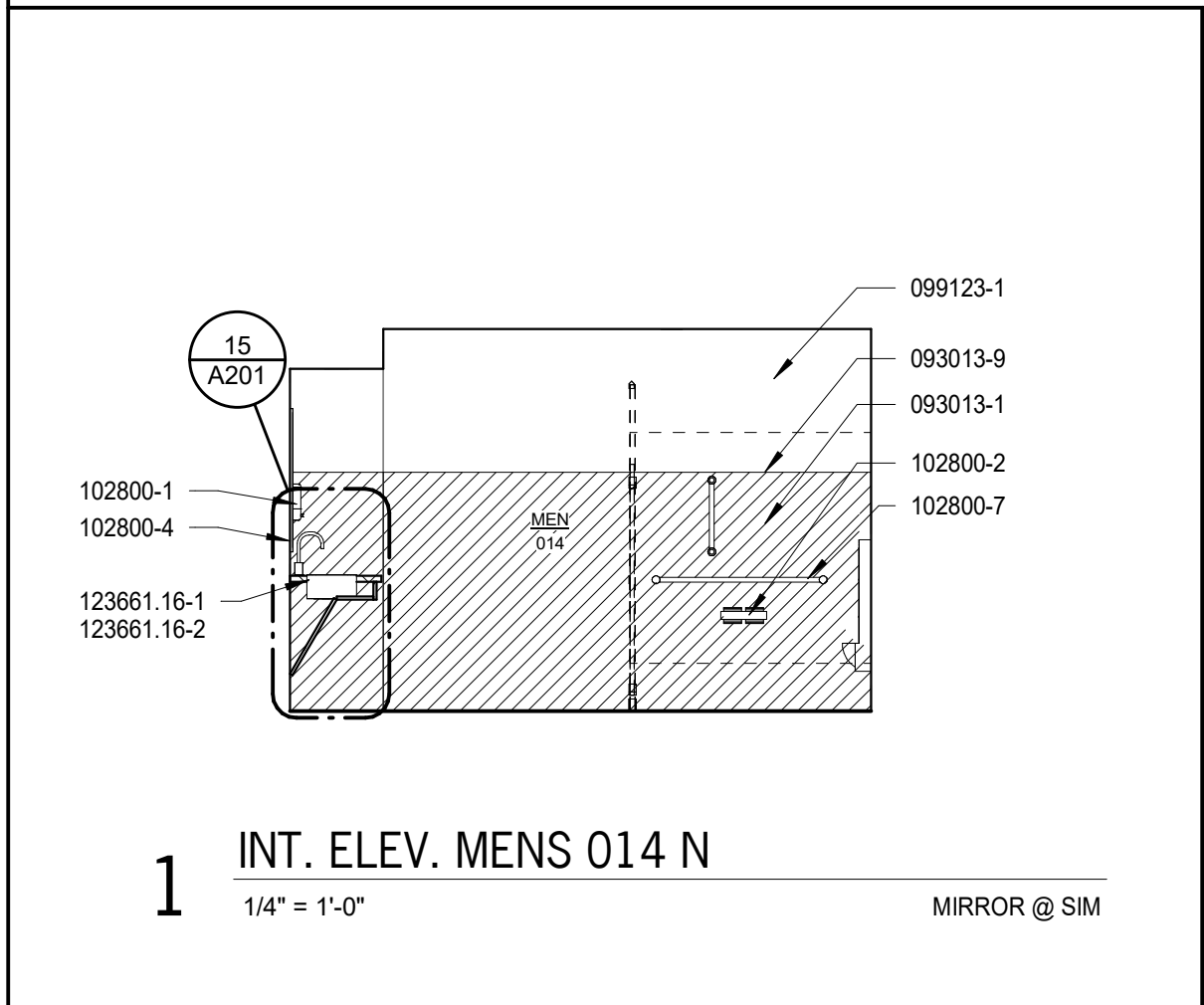
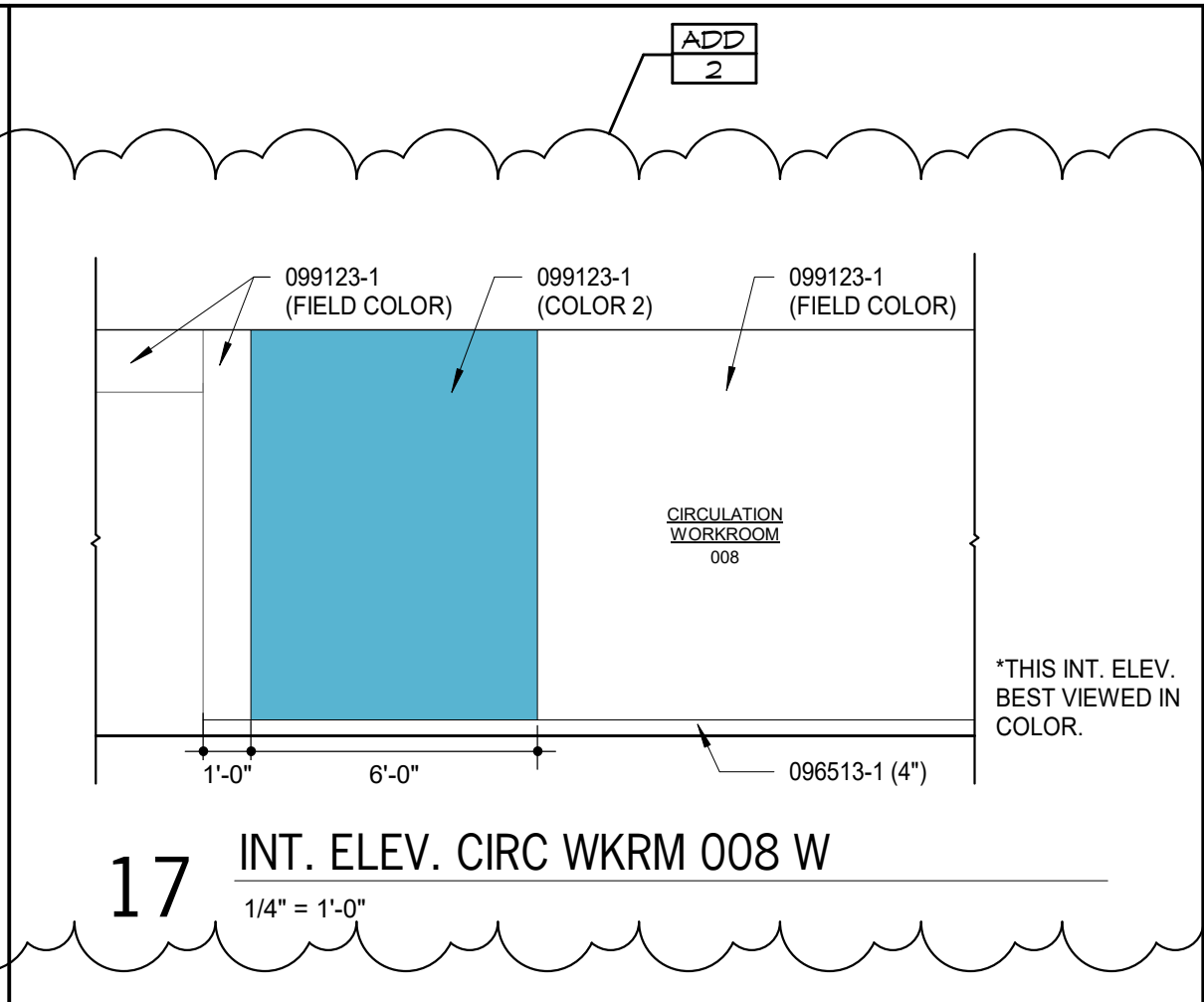
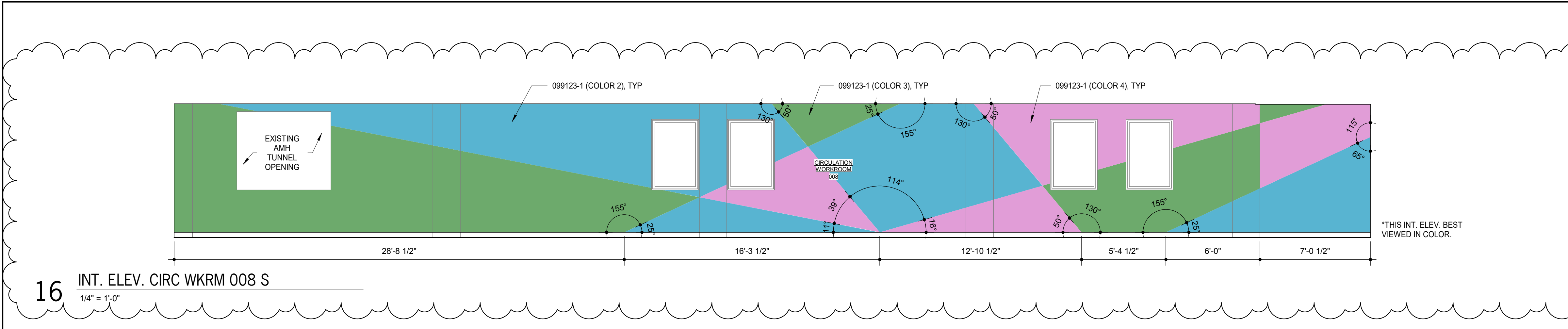
HTK Architects

1515 SW 10th Ave., Topeka, KS 66604

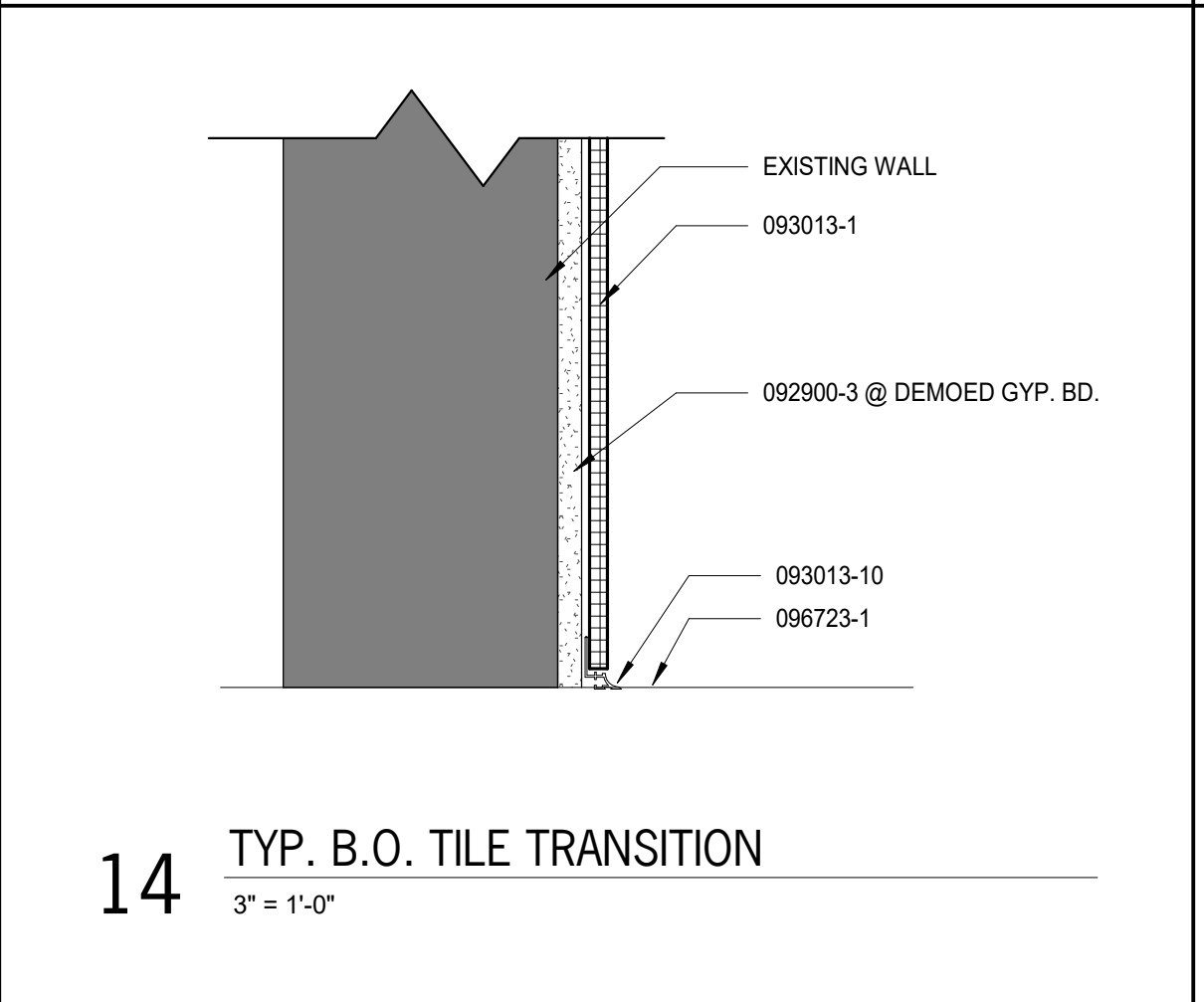
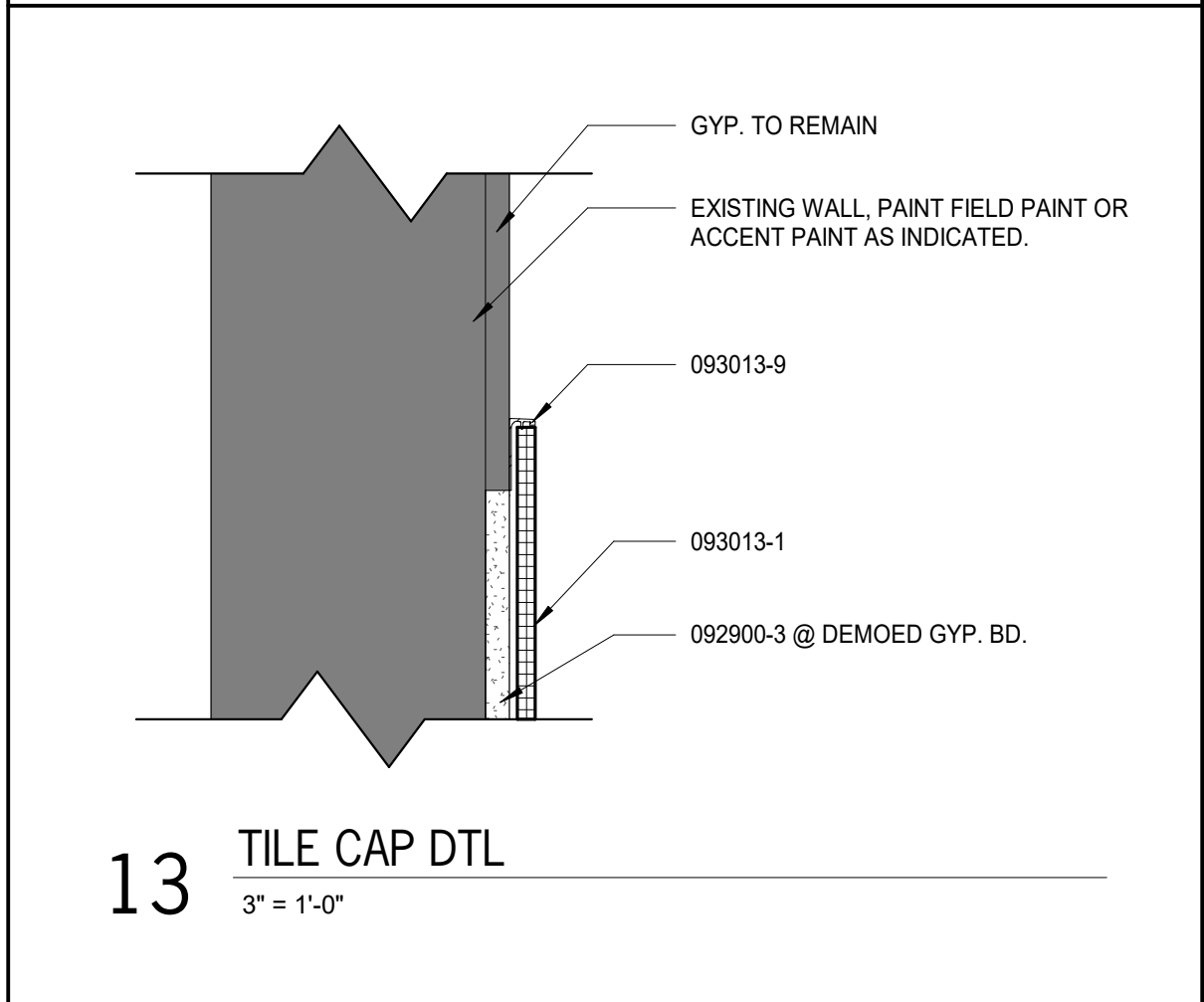
**HTK ARCHITECTS**

350 W. 10TH ST., STE. 100  
TOPEKA, KANSAS 66602  
P 785.266.5373  
www.htkarchitects.com





ROOM FINISH SCHEDULE - RR									
ROOM MARK	ROOM NAME	RES	FLOOR	BASE	NORTH	EAST	SOUTH	WEST	
002	RESTROOM	RES	PT	PTF	EPT/PT	EPT/PT	EPT/PT	EPT/PT	
005	RESTROOM	RES	PT	PTF	EPT/PT	EPT/PT	EPT/PT	EPT/PT	
008	CIRCULATION WORKROOM	CPT	RB	LAX	LAX	LAX	LAX	LAX	
008A	OFFICE	CPT	RB	LAX	LAX	LAX	LAX	LAX	
008B	OFFICE	CPT	RB	LAX	LAX	LAX	LAX	LAX	
014	MEN	RES	PT	EPT/PT	EPT/PT	EPT/PT	EPT/PT	EPT/PT	
015	WOMEN	RES	PT	EPT/PT	EPT/PT	EPT/PT	EPT/PT	EPT/PT	
054	MEN	RES	PT	EPT/PT	EPT/PT	EPT/PT	EPT/PT	EPT/PT	
057	WOMEN	RES	PT	PTF	PTF	PTF	PTF	PTF	
102	RESTROOM	RES	PT	PTF	EPT/PT	EPT/PT	EPT/PT	EPT/PT	



KEYNOTES	
NOTE: KEYNOTES ARE DRAWN FROM A MASTER LIST AND MAY NOT BE SEQUENTIALLY NUMBERED. SIZES EX-24" OR OTHER INFO FOLLOWING KEYNOTE ON DRAWINGS INDICATES CRITERIA FOR THOSE MATERIALS/LOCATIONS WHICH MAY DIFFER FROM THE STD. MATERIAL SPECIFIED.	
061000 -1 2X WOOD NAILER (")	063013 -1 TILE (X")
064116 -1 2X WOOD BLOCKING (")	-5 TILE BASE
-1 PLASTIC LAMINATE	-6 TILE CAP
-1 CASEWORK CABINETS	-7 SETTING BED
-5 PLYWOOD	-8 METAL EDGE STRIP
-7 SOLID WOOD BLOCKING	-10 METAL COVER TRIM
078413 -1 PENETRATION	095113 -1 ACoustICAL PANEL (X")
-2 FIRESTOPPING	-2 CEILING SUSPENSION SYSTEM
078443 -1 FIRE RESISTIVE JOINT SYSTEM	099123 -1 RESILIENT WALL BASE (X")
079200 -1 JOINT SEALANT	099123 -1 CARPET TILES
-2 JOINT FILLER	099123 -1 CARPET TILES
-3 GASKET	099123 -1 CARPET TILES
081113 -1 BACKER ROD	101400 -1 PANEL SCISSOR
-1 HOLLOW METAL DOOR	101400 -1 PANEL SCISSOR
-2 HOLLOW METAL FRAME	101400 -1 PANEL SCISSOR
-3 FRAME ANCHOR	101400 -1 PANEL SCISSOR
081416 -1 FLUSH WOOD DOOR	101400 -1 PANEL SCISSOR
083113 -1 ACCESS DOOR	101400 -1 PANEL SCISSOR
-2 ACCESS DOOR FRAME	101400 -1 PANEL SCISSOR
087100 -1 DOOR HARDWARE	101400 -1 PANEL SCISSOR
088300 -1 MIRROR	101400 -1 PANEL SCISSOR
092900 -2 FIRE RATED GYPSUM BOARD (")	101400 -1 PANEL SCISSOR
-3 CEMENTITIOUS TILE BACKER PANEL	101400 -1 PANEL SCISSOR
-4 METAL SUSPENSION SYSTEM	101400 -1 PANEL SCISSOR
	123661-16-1 SOLID SURFACING COUNTERTOP
	-2 INTEGRAL BOWL

TOILET ACCESSORY LEGEND	
*e/ABB - EXIST. ACCESSORY TO BE REMOVED & REINSTALLED	
ABB	DESCRIPTION
LS	WALL MTD. LIQUID SOAP DISP.
TT	TOILET TISSUE DISPENSER
MR	MIRROR 24"x36" UNO.
MRT	MIRROR 24"x66" UNO.
PT	PAPER TOWEL DISPENSER
PTD	RECESSED PAPER TOWEL DISPENSER
ND	SANITARY NAPKIN DISPOSAL
eNP	SANITARY NAPKIN DISPENSER
eSC	SHARPS CONTAINER
eBCS	WALL MOUNTED BABY CHANGING STATION
AP	ACCESS PANEL 24"x24" F.V.
eSH	SHELF

ROOM FINISH SCHEDULE LEGEND	
FLOOR	
EXIST	EXIST TO REMAIN; PATCH
RES	RESILIENT FLOORING
CPT	CARPET TILE
PTF	PROCELAN WALL TILE BASE
PT	PROCELAN WALL TILE TO 4'-8" AND EPT ABOVE
PTF	PROCELAN WALL TILE TO ABOVE OF CEILING
WALLS	
EXIST	EXIST TO REMAIN; PATCH
EPT	EPOXY PAINT
LAX	LATEX PAINT
PT	PROCELAN WALL TILE TO 4'-8" AND EPT ABOVE
PTF	PROCELAN WALL TILE TO ABOVE OF CEILING
GENERAL NOTES	
WALLS TO BE PAINTED SHALL INCLUDE PAINTING DOOR FRAMES & DOORS ON BOTH SIDES OF THE WALL. ACCESS PANELS, MECHANICAL GRILLS, AND ALL OTHER EXISTING OR NEW ITEMS ON WALL.	

TOILET ACCESSORY LEGEND	
*e/ABB - EXIST. ACCESSORY TO BE REMOVED & REINSTALLED	
ABB	DESCRIPTION
LS	WALL MTD. LIQUID SOAP DISP.
TT	TOILET TISSUE DISPENSER
MR	MIRROR 24"x36" UNO.
MRT	MIRROR 24"x66" UNO.
PT	PAPER TOWEL DISPENSER
PTD	RECESSED PAPER TOWEL DISPENSER
ND	SANITARY NAPKIN DISPOSAL
eNP	SANITARY NAPKIN DISPENSER
eSC	SHARPS CONTAINER
eBCS	WALL MOUNTED BABY CHANGING STATION
AP	ACCESS PANEL 24"x24" F.V.
eSH	SHELF

TOILET ACCESSORY LEGEND	
*e/ABB - EXIST. ACCESSORY TO BE REMOVED & REINSTALLED	
ABB	DESCRIPTION
LS	WALL MTD. LIQUID SOAP DISP.
TT	TOILET TISSUE DISPENSER
MR	MIRROR 24"x36" UNO.
MRT	MIRROR 24"x66" UNO.
PT	PAPER TOWEL DISPENSER
PTD	RECESSED PAPER TOWEL DISPENSER
ND	SANITARY NAPKIN DISPOSAL
eNP	SANITARY NAPKIN DISPENSER
eSC	SHARPS CONTAINER
eBCS	WALL MOUNTED BABY CHANGING STATION
AP	ACCESS PANEL 24"x24" F.V.
eSH	SHELF

NOTES:  
REFER TO SECTIONS AND DETAILS ON ALL OTHER SHEETS FOR APPLICABLE NOTES NOT SHOWN.

TOPEKA & SHAWNEE COUNTY PUBLIC LIBRARY  
RESTROOM RENOVATION

SHEET CONTENTS:  
• INTERIOR ELEVATIONS, FINISH SCHEDULE, & MISC. DETAILS

HTK PROJECT NUMBER:  
• 2001.01-015

SHEET NUMBER:

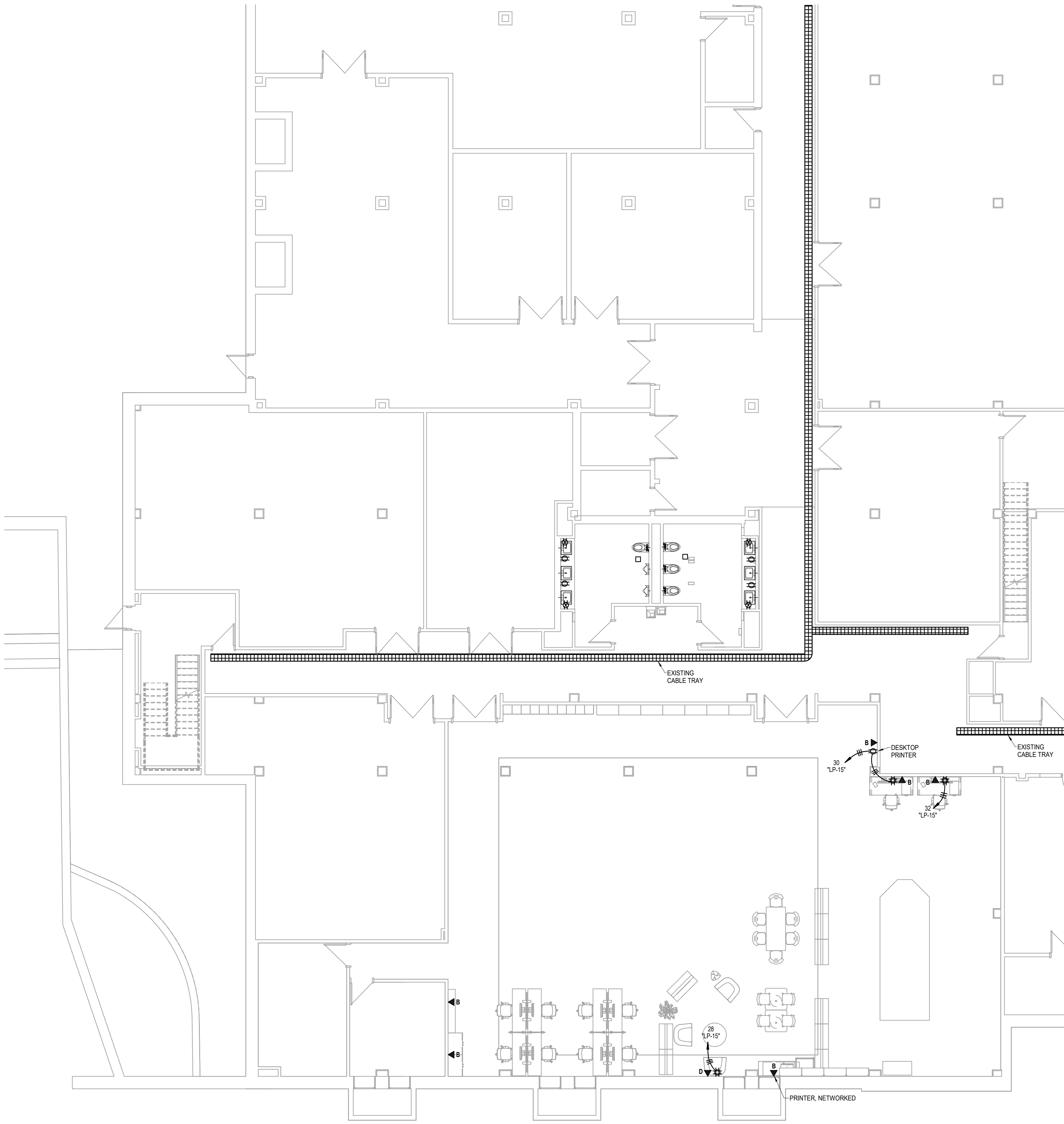
A201



HTK ARCHITECTS  
3826 W. 11TH ST., STE. 100  
TOPEKA, KANSAS 66612  
P 785.266.5373  
www.htkarchitects.com

1515 SW 10th Ave., Topeka, KS 66604





1

## LOWER FLOOR PLAN - SOUTH WEST

POWER  
1/8" = 1'-0"

- NOTES:**
- E/C SHALL PROVIDE ALL FLOORBOXES, POKETHRUS, CONDUITS, BACKBOXES, AND OTHER PATHWAYS FOR THE VOICE/DATA CABLE INFRASTRUCTURE. ALLTECH SHALL PROVIDE THE VOICE/DATA CABLING, FACEPLATES, JACKS, PATCH PANELS, TERMINATIONS, AND TESTING. E/C SHALL COORDINATE WITH ALLTECH ON ALL PATHWAYS REQUIREMENTS. G/C SHALL CONTACT ALLTECH TO INCLUDE PRICE IN BID. ALLTECH POINT OF CONTACT: SCOTT WHEAT  
PHONE (785-267-0316 EXT. 103  
EMAIL SWHEAT@ALLTECHKS.COM
  - ALLTECH SHALL COORDINATE WITH OWNER WHICH ROOM THE VOICE/DATA CABLING SHALL BE TERMINATED.

- LEGEND:**
- 1 GFI RECEPTACLE INSTALL BELOW SINK FOR FAUCET CONTROL.
  - 2 NEW WIRING DEVICE AND COVER PLATE.
  - 3 CONNECT TO NEARBY ELECTRICAL CIRCUIT.



# TOPEKA & SHAWNEE COUNTY PUBLIC LIBRARY RESTROOM RENOVATION

HTK Architects

1515 SW 10th Ave., Topeka, KS 66604

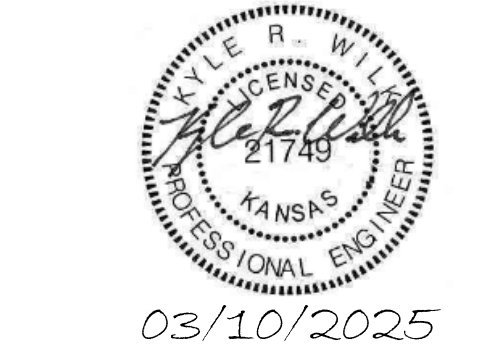
DATE:  
• March 10, 2025

REVISED DATE:  
• ADDENDUM #1 - 3/28/25

SHEET CONTENTS:  
• ENLARGED FLOOR PLANS  
• POWER

HTK PROJECT NUMBER:  
• 2001.01-015

SHEET NUMBER:  
**E102**



**HTK ARCHITECTS**

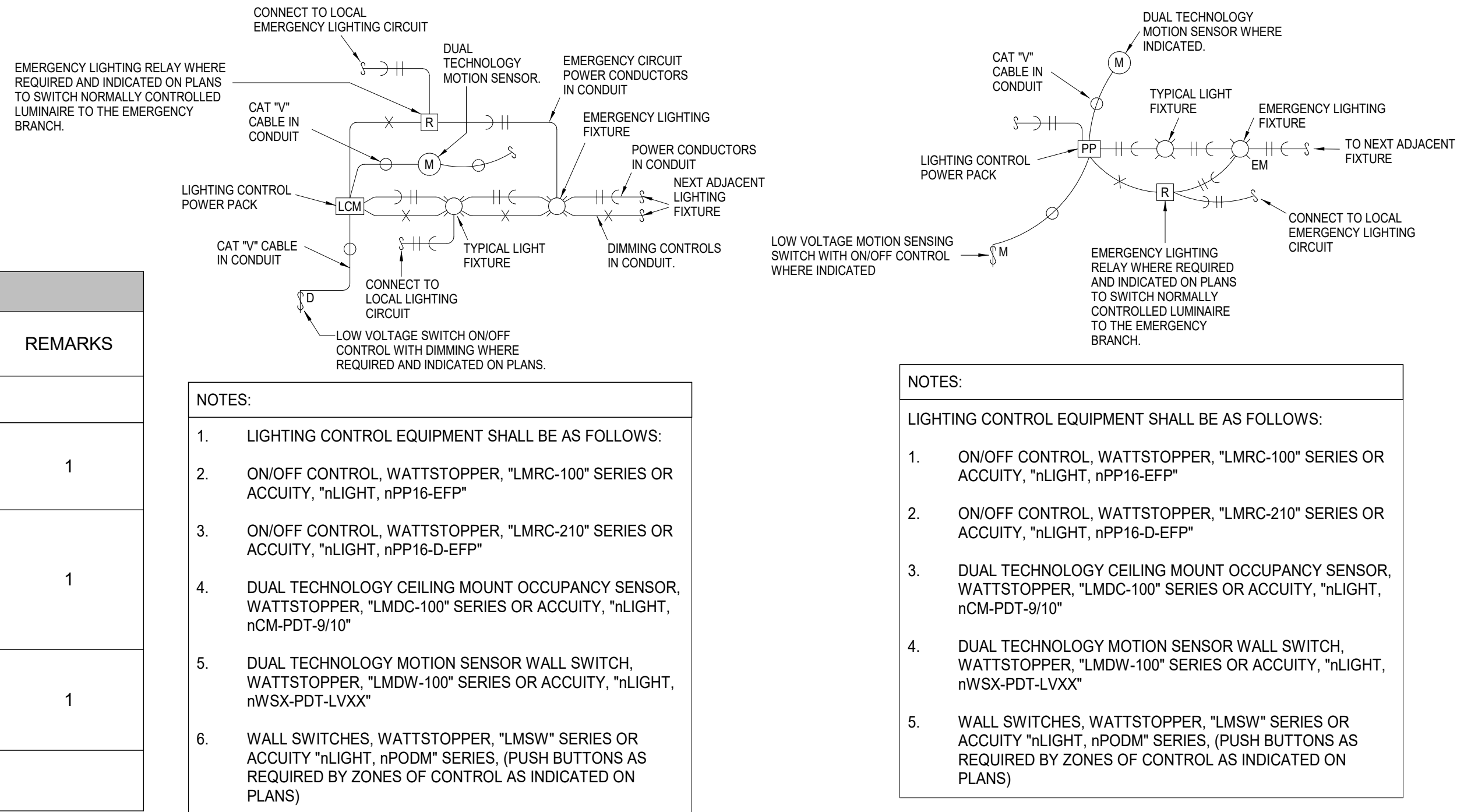
850 S. KANSAS AVE., SUITE 600  
TOPEKA, KANSAS 66612  
P 785.266.5273 WWW.htkarchitects.com

3/31/2025 3:13:46 PM Autodesk Docs://TSCPL - Staff Restroom - LSA MEP R23/TSCPL - Staff Restroom MEP R23.rvt

LIGHT FIXTURE SCHEDULE													
MARK	MANUFACTURER	CATALOG NUMBER	DESCRIPTION	MOUNTING					FINISH	SOURCE		WATTAGE	REMARKS
				RECESSED T-BAR CEILING	RECESSED GYP BD CEILING	SURFACE	WALL	PENDANT		TYPE	CODE		
"D1"													
"A"	HE WILLIAMS CORONET	LL6 G 4 L34/840 SW/F/AF125 UNV RAY6R 4 40 LTG3 UNI T	NOMINAL 6" RECESSED SLOT TO COORDINATE WITH ARCHITECTURAL GRID CEILING SYSTEM. 4 FT FLUSH LENS 80 CRI, 4000 DEG K COLOR TEMPERATURE UNIVERSAL DRIVER.	X					WHITE	LED	3400 LUMENS	45 W/ 4FT SECTION 78 LPW	1
"B1"	HE WILLIAMS LITHONIA	6DR L15 90 40 UNIV R W OF CS LDN6 40 15 LO6 AR LSS MVOLT	6" ROUND LED FLUSH LENSED DOWNLIGHTING LUMINAIRE. NOMINAL 6" ROUND APERTURE. ALUMINUM DIE CAST OUTER FRAME WITH CLEAR SEMI-SPECULAR ANODIZED FINISH. INTEGRAL UNIVERSAL DRIVER. CRI OF 90, 4000K COLOR TEMPERATURE. LUMINAIRE. PROVIDE MOUNTING HARDWARE FOR INSTALLATION INTO NEW LAY IN GRID TYPE CEILING.	X					WHITE	LED	1500	17	1
"C"	HE WILLIAMS LITHONIA	LP 2 2 L40 8 40 UNV CPANL 2X2 24/33/44LM 40K M4	NOMINAL 2' X 2' RECESSED GRID MOUNTED STATIC FLAT PANEL LED LIGHTING FIXTURE. 4000 NOMINAL LUMEN OUTPUT 80 CRI, 4000 DEG K COLOR TEMPERATURE.	X					WHITE	LED	4000 LUMENS	40	1

NOTES:  
1 ALL FIXTURES 4000K COLOR TEMPERATURE UNLESS NOTED OTHERWISE  
2 VERIFY COLOR SELECTION WITH ARCHITECT

REMARKS:  
1 PAINT AFTER FABRICATION  
2 0-10V DIMMING DRIVER



## 1 LIGHTING CONTROL SCHEMATIC NO SCALE ON/OFF CONTROL WITH DIMMING

## 2 LIGHTING CONTROL SCHEMATIC NO SCALE ON/OFF CONTROL NON DIMMED

NOTES:  
1. VERIFY ROOM NUMBERS WITH OWNER PRIOR TO LABELING FACEPLATES AND PATCH PANELS.  
2. CONTRACTOR TO FIELD VERIFY ALL MEASUREMENTS PRIOR TO INSTALLATION.  
3. T/C TO INSTALL FIRE STOP IN ALL SLEEVES AND CONDUITS. INSTALL PER MANUFACTURERS LISTED UL SYSTEM.  
4. CONDUITS THAT HAVE A INTERNAL DIAMETER OF 2" OR LESS SHALL HAVE A BEND RADIUS OF AT LEAST 6 TIMES THE INTERNAL CONDUIT DIAMETER AND 10 TIMES THE INTERNAL DIAMETER FOR CONDUITS LARGER THAN 2".  
5. MOUNT ALL CABLES WITH A D-RING OR OTHER ACCEPTABLE FASTENER. PROVIDE WIRE TIES EVENLY SPACED TO PROVIDE A CLEAN INSTALLATION.

TELECOMMUNICATIONS CABLING SCHEDULE									
MARK	DESCRIPTION	CABLE CONDUCTORS	MANUFACTURER	MODEL NUMBER	PROVIDED BY	INSTALLED BY	NOMINAL O.D.	JACKET COLOR	REMARKS
1	CATEGORY 6 HORIZONTAL CABLING	4-PAIR	BERTEK	10163780	ALLTECH	ALLTECH	0.220"	BLUE	2

REMARKS:  
1- RISER RATED  
2- PLENUM RATED  
3- EQUIVALENT BY QUICKTRON.

TELECOMMUNICATIONS HARDWARE SCHEDULE					
MARK	MANUFACTURER	MODEL/PART NUMBER	PROVIDED BY	INSTALLED BY	DESCRIPTION
1	LEVITON	69586-U48	ALLTECH	ALLTECH	CATEGORY 6 48-PORT 2 RJU PATCH PANEL
2	LEVITON	43080-1L6	ALLTECH	ALLTECH	6-PLEX FACEPLATE (STAINLESS STEEL)
3	LEVITON	61110-RG6	ALLTECH	ALLTECH	GREY QUICKPORT CAT6 MODULE
4	LEVITON	41084-BGB	ALLTECH	ALLTECH	GREY QUICKPORT BLANK MODULE
5	LEVITON	41080-LEB	ALLTECH	ALLTECH	PRE-PRINTED PORT DESCRIPTION LABELS

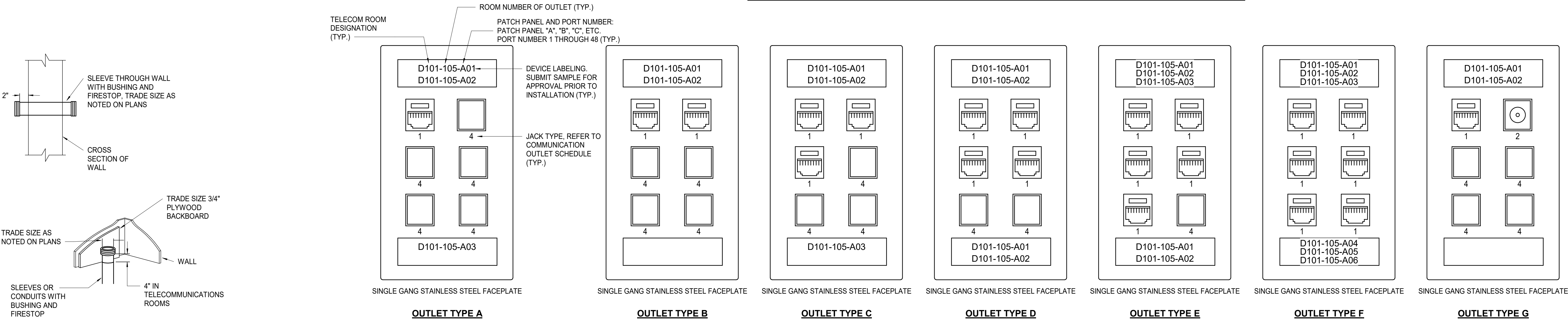
REMARKS:  
1 - PROVIDE ASSOCIATED HARDWARE COMPONENTS TO COMPLETE INSTALLATION PER MFG REQUIREMENTS. PROVIDE DROP-OUTS AS REQUIRED.

TELECOMMUNICATIONS LEGEND		
SYMBOL	DESCRIPTION	REMARKS
▼ D001A	TELECOMMUNICATIONS OUTLET WITH ROOM AND TYPE IDENTIFIER	1
▼ <sub>W</sub>	TELECOMMUNICATIONS OUTLET WALL PHONE PLATE	2
▼ <sub>AV</sub>	AUDIOVISUAL OUTLET	3
TV	TELEVISION OUTLET	1
---	EMT CONDUIT BY E/C (1 1/4" UNLESS NOTED OTHERWISE)	4
---	EMT SLEEVE BY E/C (2" UNLESS NOTED OTHERWISE)	4
AFF	ABOVE FINISHED FLOOR	
T/C	TELECOMMUNICATIONS CONTRACTOR	
E/C	ELECTRICAL CONTRACTOR	
G/C	GENERAL CONTRACTOR	
AC	DEVICE LOCATED ABOVE COUNTER	
TMGB	TELECOMMUNICATIONS MAIN GROUNDING BUSBAR	
TGB	TELECOMMUNICATIONS GROUNDING BUSBAR	
---	TELECOMMUNICATIONS CABLING	5
FACP	FIRE ALARM CONTROL PANEL	
SM	SINGLEMODE FIBER	
MM	MULTIMODE FIBER	
WAP	WIRELESS ACCESS POINT	6

TELECOMMUNICATIONS CABLING IDENTIFIER

TELECOM ROOM → D001A → OUTLET TYPE

1 - 4x4 STEEL CITY BACKBOX, MODEL NUMBER 72171-1-1/4 W/ SINGLE GANG PLASTER RING AND 1 1/4" CONDUIT TO ABOVE ACCESSIBLE CEILING AS INDICATED ON DRAWINGS BY E/C.  
2 - 2x4 BACKBOX WITH 3/4" CONDUIT TO ABOVE ACCESSIBLE CEILING  
3 - 4x4 STEEL CITY BACKBOX, MODEL NUMBER 72171-1-1/4 WITH DOUBLE GANG PLASTER RING BY E/C. CONDUITS AS INDICATED ON PLANS.  
4 - E/C TO PROVIDE CONDUIT BUSHING ON CONDUIT PRIOR TO T/C INSTALLING CABLING.  
5 - CABLING SHALL BE SUPPORTED WITH J-HOOKS AT 48" O.C. WHERE NOT IN CONDUIT.  
6 - 2x4 SURFACE MOUNT BACKBOX LOCATED ABOVE ACCESSIBLE CEILING.



## 3 SLEEVE/CONDUIT DETAIL NOT TO SCALE

## 4 COMMUNICATION OUTLET DETAIL NOT TO SCALE

**LS&A**  
Lattimer Schummers & Associates, P.A.  
CONSULTING ENGINEERS  
3639 SW Summerfield Drive, Suite A  
Topeka, Kansas 66619-3972  
6625 College Boulevard, Suite 102  
Overland Park, Kansas 66210  
Telephone: (785) 233-3333  
Email: info@lsanda.com  
Fax: (785) 233-3333

**HTK ARCHITECTS**  
500 S. KANSAS AVE., SUITE 400  
TOPEKA, KANSAS 66612  
P 785.266.5273 WWW.htkarchitects.com



03/10/2025

DATE:  
• March 10, 2025

REVISED DATE:  
• ADDENDUM #1 - 3/28/25

**TOPEKA & SHAWNEE COUNTY PUBLIC LIBRARY  
RESTROOM RENOVATION**

HTK Architects  
1515 SW 10th Ave., Topeka, KS 66604

SHEET CONTENTS:  
• ELECTRICAL DETAILS AND SCHEDULES

HTK PROJECT NUMBER:  
• 2001.01-015

SHEET NUMBER:  
**E301**